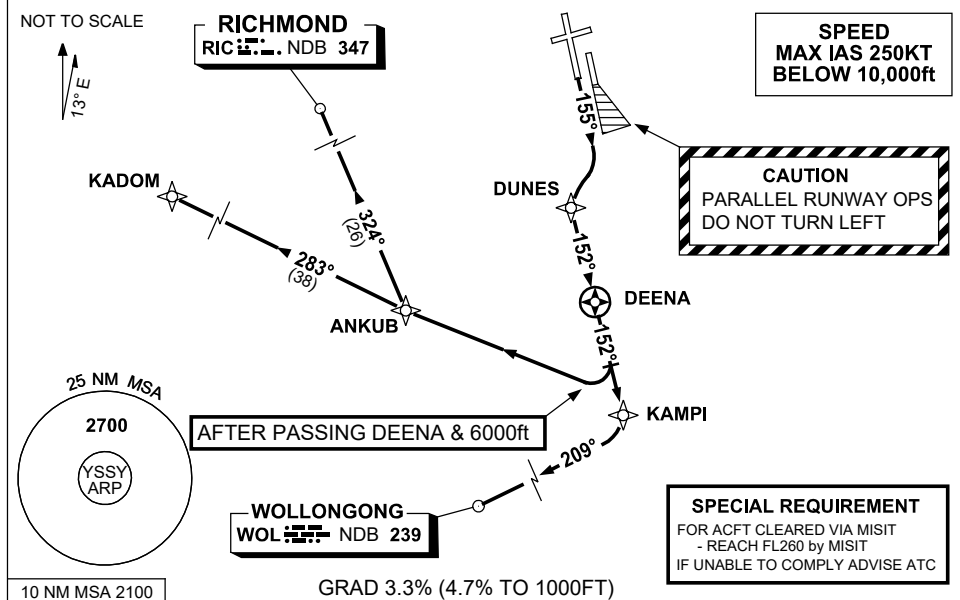


# STANDARD INSTRUMENT DEPARTURES (SID) RWY 16R DEENA SEVEN (JET) (RNAV) SYDNEY/KINGSFORD SMITH, NSW (YSSY)

24 MAR 2022

ATIS 118.55 126.25	ACD 133.8	SMC E OF RWY 16R/34L 121.7 W OF RWY 16R/34L 126.5	TWR 120.5	DEP(N) N&E 123.0	DEP(S) S,W&NW 129.7
-----------------------	--------------	---	--------------	---------------------	------------------------



## DEPARTURE: DEENA SEVEN

**RWY 16R**

**CAUTION:** Parallel runway operations - DO NOT TURN LEFT

- GRAD 3.3% (4.7% to 1000ft).
- Track 155°.
- As soon as practicable turn RIGHT, track DCT to DUNES.
- From DUNES turn LEFT track 152° to DEENA, then follow transition instructions.

## TRANSITIONS:

### KADOM

- At DEENA:
  - Turn RIGHT if through 6000ft, OR
  - Track 152° until past 6000ft then turn RIGHT
- Track DCT to ANKUB
- From ANKUB track 283° to KADOM, thence as cleared

### RICHMOND (RIC)

- At DEENA:
  - Turn RIGHT if through 6000ft, OR
  - Track 152° until past 6000ft then turn RIGHT
- Track to ANKUB
- From ANKUB track 324° to RIC NDB, thence as cleared
- For ACFT cleared via MISIT see SPECIAL REQUIREMENT above

### WOLLONGONG (WOL)

- At DEENA track 152° to KAMPI
- From KAMPI turn RIGHT track 209° to WOL NDB, thence as cleared

Changes: Editorial.

SSYDP04-170