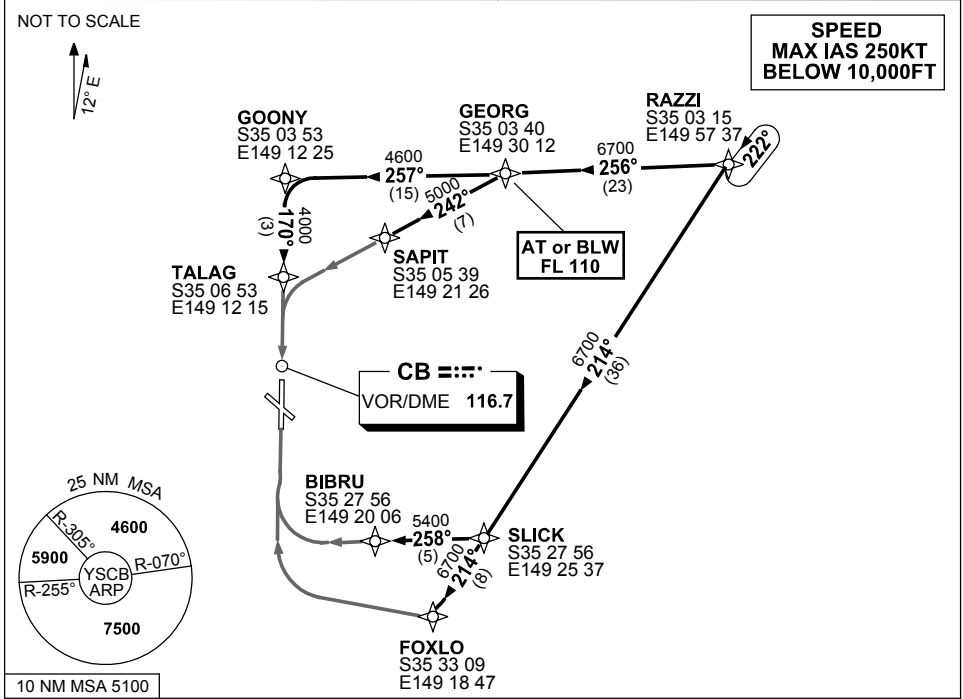


**STANDARD ARRIVAL ROUTE (STAR)  
RAZZI SIX WHISKEY, YANKEE ARRIVALS (JET) (RNAV)  
CANBERRA, ACT (YSCB)**

17 AUG 2017

ATIS 116.7 127.45 263	AWIS (AH) 116.7	APP 124.5	TWR 118.7	SMC/ACD 121.7	FIA (AH) ML CEN 125.9	CTAF+AFRU (AH) AFRU+PAL (AH) 118.7	Bearings are Magnetic Elevations in FEET AMSL
--------------------------	--------------------	--------------	--------------	------------------	--------------------------	--	--



**ARRIVAL: RAZZI SIX**

**RWY 17 YANKEE:**

- From RAZZI track 256° to GEORG
- Cross** GEORG AT or BLW FL 110
- Turn LEFT, track 242° to SAPIT
- Track via RNAV-Y (RNP) RWY 17
- MAX IAS 210KT from SAPIT

**RWY 17 WHISKEY:**

- From RAZZI track 256° to GEORG
- Cross** GEORG AT or BLW FL 110
- Track 257° to GOONY
- Turn LEFT, track 170° to TALAG
- Track via RNAV-W (RNP) RWY 17
- MAX IAS 210KT from TALAG

**RWY 35 YANKEE:**

- From RAZZI track 214° to SLICK
- Turn RIGHT track 258° to BIBRU
- Track via RNAV-Y (RNP) RWY 35

**RWY 35 WHISKEY:**

- From RAZZI track 214° to SLICK
- Track 214° to FOXLO
- Track via RNAV-W (RNP) RWY 35

**COMMUNICATIONS FAILURE: PROCEDURE IN IMC**

- Squawk 7600, comply with vertical navigation requirements, but not below MSA.
- Track via the latest STAR clearance to the nominated runway, then fly the most suitable approach in accordance with ERSA EMERG Section 1.5.

Changes: FROM SUP H63/17, RNAV-Y, NAME & PROC NUMBER.

SCBSR13-152