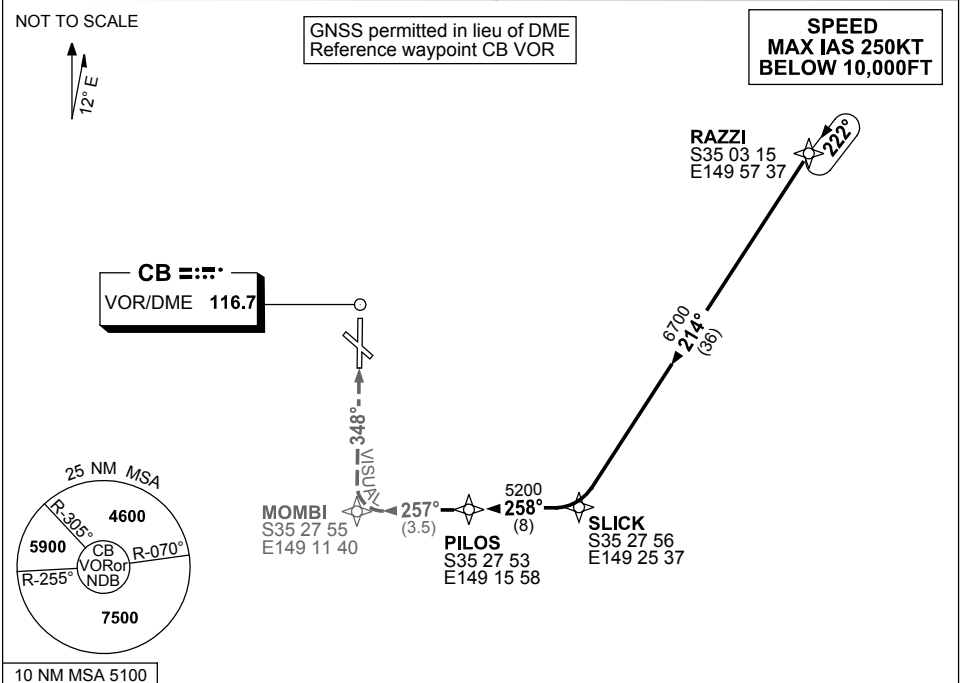


**STANDARD ARRIVAL ROUTE (STAR)
RAZZI SIX VICTOR ARRIVAL (JET) (RNAV)
CANBERRA, ACT (YSCB)**

17 AUG 2017

ATIS 116.7 127.45 263	AWIS (AH) 116.7	APP 124.5	TWR 118.7	SMC/ACD 121.7	FIA (AH) ML CEN 125.9	CTAF+AFRU (AH) AFRU+PAL (AH) 118.7	Bearings are Magnetic Elevations in FEET AMSL
--------------------------	--------------------	--------------	--------------	------------------	--------------------------	--	--



ARRIVAL: RAZZI SIX

RWY 35 VICTOR:

(HJ ONLY)

- From RAZZI track 214° to SLICK
- Turn RIGHT, track 258° to PILOS
- Track 257° VISUAL to MOMBI
- Turn RIGHT, intercept VISUAL final RWY 35

COMMUNICATIONS FAILURE: PROCEDURE IN IMC

- Squawk 7600, comply with vertical navigation requirements, but not below MSA.
- Track via the latest STAR clearance to the nominated runway, then fly the most suitable approach in accordance with ERSA EMERG Section 1.5.

Changes: FROM SUP H63/17, PROC NUMBER.

SCBSR11-152