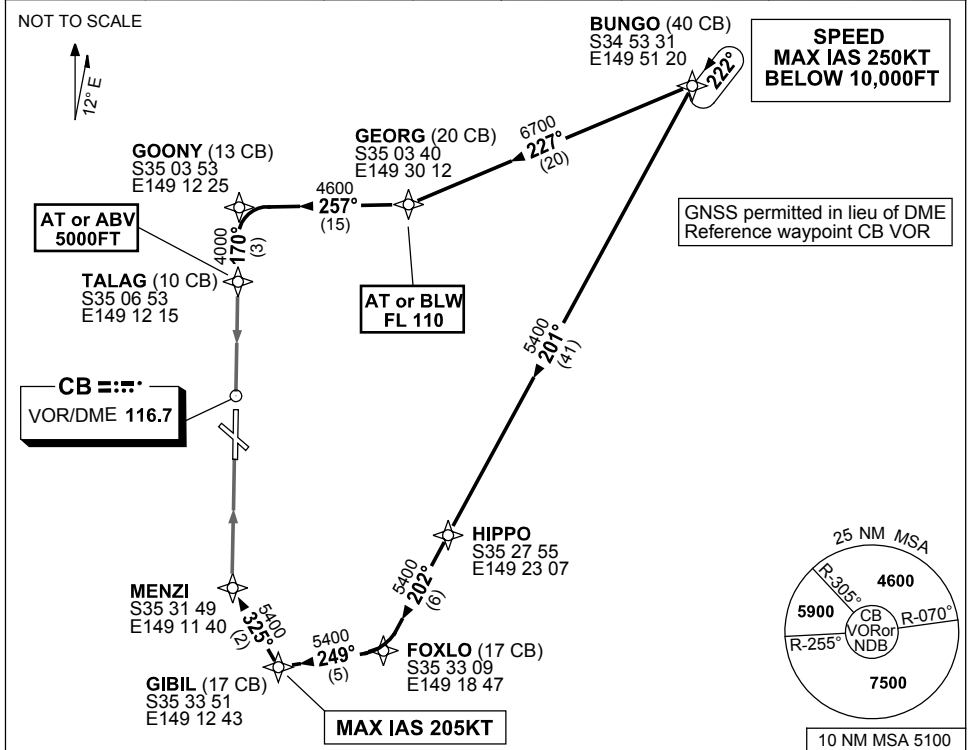


**STANDARD ARRIVAL ROUTE (STAR)  
BUNGO THREE ALPHA ARRIVAL (NON-JET) (RNAV)  
CANBERRA, ACT (YSCB)**

**2 MAR 2017**

ATIS 116.7 127.45 263	AWIS (AH) 116.7	APP 124.5	TWR 118.7	SMC/ACD 121.7	FIA (AH) ML CEN 125.9	CTAF+AFRU (AH) AFRU+PAL (AH) 118.7	Bearings are Magnetic Elevations in FEET AMSL
--------------------------	--------------------	--------------	--------------	------------------	--------------------------	--	--



**ARRIVAL: BUNGO THREE**

**RWY 17 ALPHA:**

- From BUNGO track 227° to GEORG  
**Cross** GEORG AT or BLW FL110
- Turn RIGHT, track 257° to GOONY
  - Turn LEFT, track 170° to TALAG  
**Cross** TALAG AT or ABV 5000FT
  - Track via VOR RWY 17 approach

**RWY 35 ALPHA:**

- From BUNGO track 201° to HIPPO
- Turn RIGHT, track 202° to FOXLO
  - Turn RIGHT track 249° from GIBIL  
**MAX IAS 205KT** from GIBIL
  - Turn RIGHT, track 325° to MENZI  
For ILS, RNAV-Z (GNSS), LOC or VOR RWY 35 approach.

**COMMUNICATIONS FAILURE: PROCEDURE IN IMC**

- Squawk 7600, comply with vertical navigation requirements, but not below MSA.
- Track via the latest STAR clearance to the nominated runway, then fly the most suitable approach in accordance with ERSA EMERG Section 1.5.

Changes: PROC NAME, RWY 35 BRAVO WITHDRAWN, MAX IAS EDITORIAL, TURN DIRECTION AT HIPPO.

SCBSR10-150