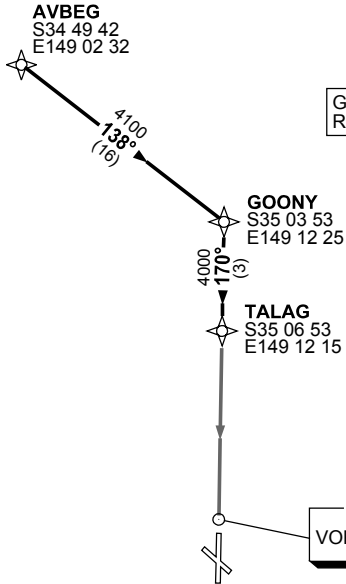


**STANDARD ARRIVAL ROUTE (STAR)  
AVBEG THREE WHISKEY ARRIVAL (RNAV)  
CANBERRA, ACT (YSCB)**

**17 AUG 2017**

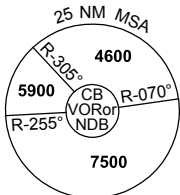
ATIS 116.7 127.45 263	AWIS (AH) 116.7	APP 124.5	TWR 118.7	SMC/ACD 121.7	FIA (AH) ML CEN 125.9	CTAF+AFRU (AH) AFRU+PAL (AH) 118.7	Bearings are Magnetic Elevations in FEET AMSL
--------------------------	--------------------	--------------	--------------	------------------	--------------------------	--	--

NOT TO SCALE



**SPEED  
MAX IAS 250KT  
BELOW 10,000FT**

GNSS permitted in lieu of DME  
Reference waypoint CB VOR



**CB 116.7**  
VOR/DME

10 NM MSA 5100

**ARRIVAL: AVBEG THREE**

**RWY 17 WHISKEY:**

- From AVBEG track 138° to GOONY
- Turn RIGHT, track 170° to TALAG
- Track via RNAV-W (RNP) to RWY 17

**COMMUNICATIONS FAILURE: PROCEDURE IN IMC**

- Squawk 7600, comply with vertical navigation requirements, but not below MSA.
- Track via the latest STAR clearance to the nominated runway, then fly the most suitable approach in accordance with ERS A EMERG Section 1.5.

Changes: NEW PROC.

SCBSR09-152