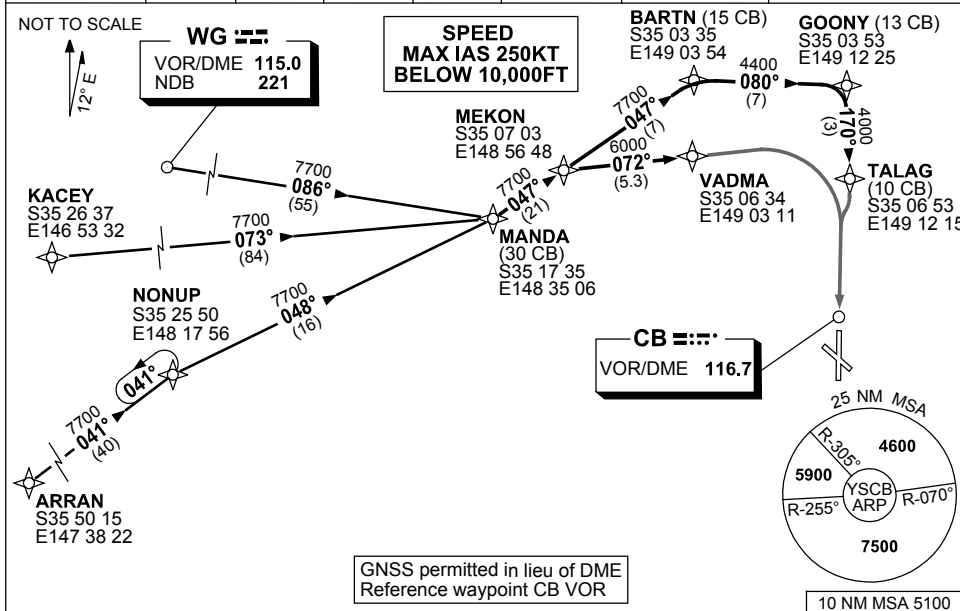


**STANDARD ARRIVAL ROUTE (STAR)
MANDA ONE X-RAY, WHISKEY ARRIVALS (RNAV)
CANBERRA, ACT (YSCB)**

24 MAY 2018

ATIS 116.7 127.45 263	AWIS (AH) 116.7	APP 124.5	TWR 118.7	SMC/ACD 121.7	FIA (AH) ML CEN 125.9	CTAF+AFRU (AH) AFRU+PAL (AH) 118.7	Bearings are Magnetic Elevations in FEET AMSL
--------------------------	--------------------	--------------	--------------	------------------	--------------------------	--	--



TRANSITIONS:

- WAGGA:** From WG VOR to MANDA:
(WG)
- Track 086° to MANDA
 - Then follow ARRIVAL instructions
- KACEY:** From KACEY to MANDA:
- Track 073° to MANDA
 - Then follow ARRIVAL instructions

- ARRAN:** From ARRAN to MANDA:
- Track 041° to NONUP
 - Turn RIGHT, track 048° to MANDA
 - Then follow ARRIVAL instructions

ARRIVAL: MANDA ONE

- RWY 17 X-RAY:** From MANDA track 047° to MEKON
- Turn RIGHT, track 072° to VADMA
 - Track via RNAV-X (RNP) RWY 17

- RWY 17 WHISKEY:** From MANDA track 047° to MEKON
- Track 047° to BARTN
 - Turn RIGHT, track 080° to GOONY
 - Turn RIGHT, track 170° to TALAG
 - Track via RNAV-W (RNP) RWY 17

COMMUNICATIONS FAILURE: PROCEDURE IN IMC

- Squawk 7600, comply with vertical navigation requirements, but not below MSA.
- Track via the latest STAR clearance to the nominated runway, then fly the most suitable approach in accordance with ERS A EMERG Section 1.5.

Changes: PROC NUMBER, NONUP, WOLBI TRANSITION DELETED.

SCBSR06-155