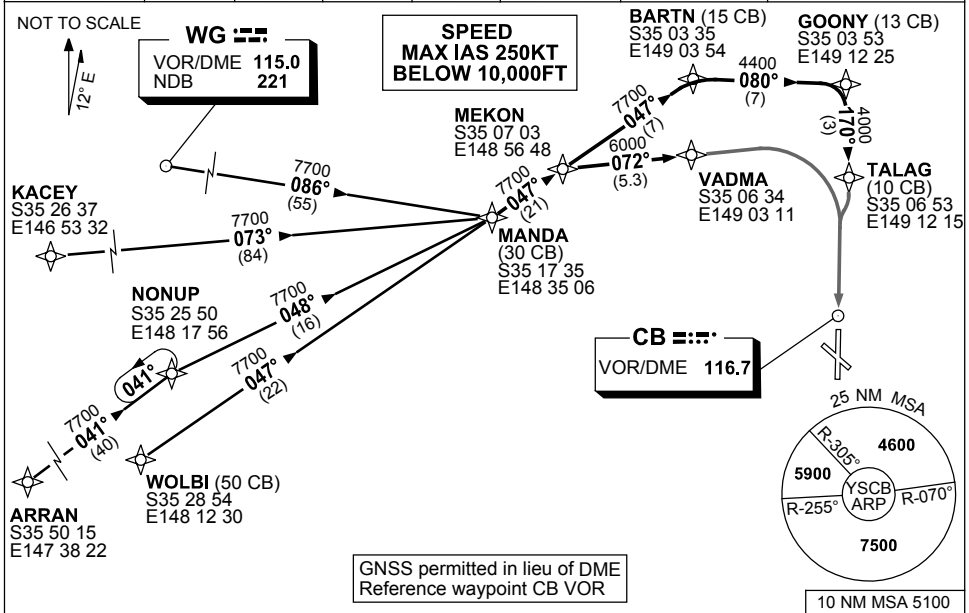


**STANDARD ARRIVAL ROUTE (STAR)
MANDA NINE X-RAY, WHISKEY ARRIVALS (RNAV)
CANBERRA, ACT (YSCB)**

17 AUG 2017

| | | | | | | | |
|--------------------------|--------------------|--------------|--------------|------------------|--------------------------|--|--|
| ATIS 116.7 127.45 263 | AWIS (AH) 116.7 | APP 124.5 | TWR 118.7 | SMC/ACD 121.7 | FIA (AH) ML CEN 125.9 | CTAF+AFRU (AH) AFRU+PAL (AH) 118.7 | Bearings are Magnetic Elevations in FEET AMSL |
|--------------------------|--------------------|--------------|--------------|------------------|--------------------------|--|--|



TRANSITIONS:

- WAGGA:** From WAGGA to MANDA:
(WG)
• Track 086° to MANDA
• Then follow ARRIVAL instructions
- KACEY:** From KACEY to MANDA:
• Track 073° to MANDA
• Then follow ARRIVAL instructions

- ARRAN:** From ARRAN to MANDA:
• Track 041° to NONUP
• Turn RIGHT, track 048° to MANDA
• Then follow ARRIVAL instructions
- NONUP:** From NONUP to MANDA:
• Track 048° to MANDA
• Then follow ARRIVAL instructions
- WOLBI:** From WOLBI to MANDA:
• Track 047° to MANDA
• Then follow ARRIVAL instructions

- ARRIVAL:** **MANDA NINE**
- RWY 17 X-RAY:** From MANDA track 047° to MEKON
• Turn RIGHT, track 072° to VADMA
• Track via RNAV-X (RNP) RWY 17
- RWY 17 WHISKEY:** From MANDA track 047° to MEKON
• Track 047° to BARTN
• Turn RIGHT, track 080° to GOONY
• Turn RIGHT, track 170° to TALAG
• Track via RNAV-W (RNP) RWY 17

COMMUNICATIONS FAILURE: PROCEDURE IN IMC

- Squawk 7600, comply with vertical navigation requirements, but not below MSA.
- Track via the latest STAR clearance to the nominated runway, then fly the most suitable approach in accordance with ERSA EMERG Section 1.5.

Changes: FROM SUP H63/17.

SCBSR06-152