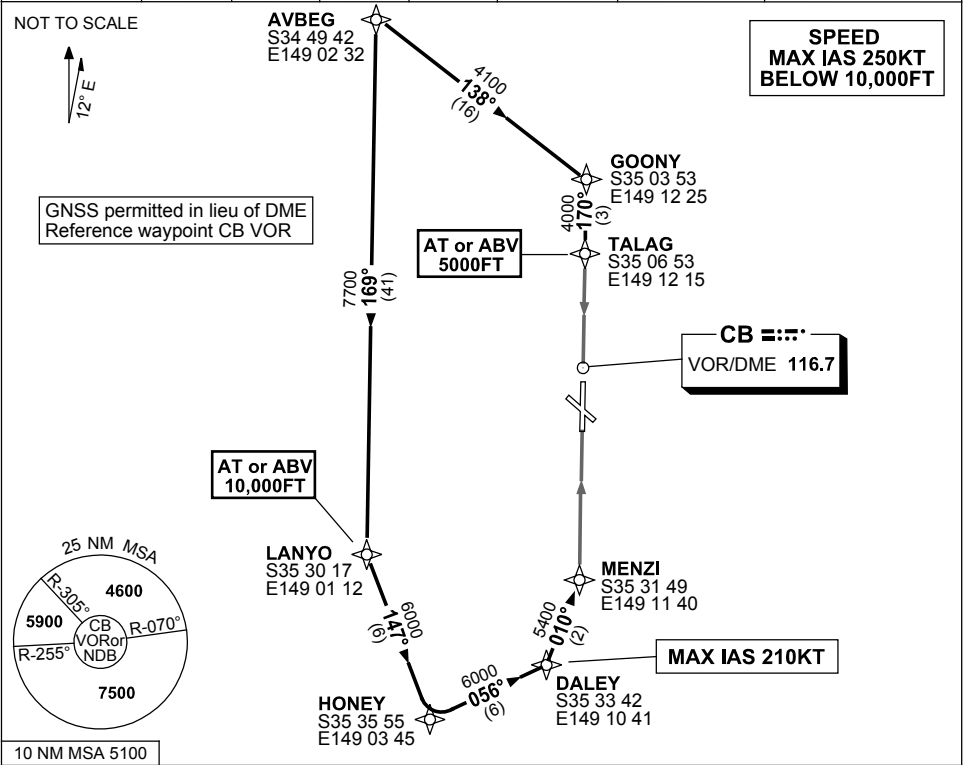


**STANDARD ARRIVAL ROUTE (STAR)  
AVBEG THREE ALPHA ARRIVAL (RNAV)  
CANBERRA, ACT (YSCB)**

**17 AUG 2017**

ATIS 116.7 127.45 263	AWIS (AH) 116.7	APP 124.5	TWR 118.7	SMC/ACD 121.7	FIA (AH) ML CEN 125.9	CTAF+AFRU (AH) AFRU+PAL (AH) 118.7	Bearings are Magnetic Elevations in FEET AMSL
--------------------------	--------------------	--------------	--------------	------------------	--------------------------	--	--



**ARRIVAL: AVBEG THREE**

**RWY 17 ALPHA:**

- From AVBEG track 138° to GOONY
- Turn RIGHT, track 170° to TALAG
- **Cross** TALAG AT or ABV 5000FT
- Track via VOR RWY 17 approach

**RWY 35 ALPHA:**

- From AVBEG track 169° to LANYO
- **Cross** LANYO AT or ABV 10,000FT
- Turn LEFT, track 147° to HONEY
- Turn LEFT, track 056° to DALEY
- **MAX IAS** 210KT from DALEY
- Turn LEFT, track 010° to MENZI
- For ILS, RNAV-Z (GNSS), LOC or VOR RWY 35 approach

**COMMUNICATIONS FAILURE: PROCEDURE IN IMC**

- Squawk 7600, comply with vertical navigation requirements, but not below MSA.
- Track via the latest STAR clearance to the nominated runway, then fly the most suitable approach in accordance with ERSA EMERG Section 1.5.

Changes: PROC NAME.

SCBSR05-152