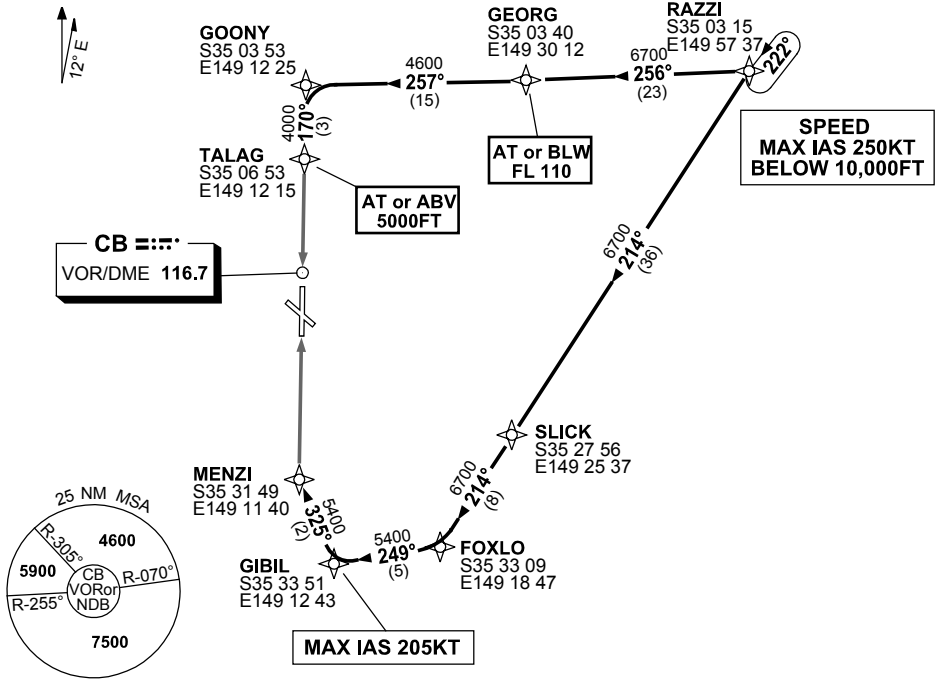


**STANDARD ARRIVAL ROUTE (STAR)
RAZZI SIX ALPHA ARRIVAL (JET) (RNAV)
CANNBERRA, ACT (YSCB)**

17 AUG 2017

ATIS 116.7 127.45 263	AWIS (AH) 116.7	APP 124.5	TWR 118.7	SMC/ACD 121.7	FIA (AH) ML CEN 125.9	CTAF+AFRU (AH) AFRU+PAL (AH) 118.7	Bearings are Magnetic Elevations in FEET AMSL
--------------------------	--------------------	--------------	--------------	------------------	--------------------------	--	--

NOT TO SCALE



10 NM MSA 5100

- ARRIVAL: RAZZI SIX**
- RWY 17 ALPHA:**
- From RAZZI track 256° to GEORG
 - **Cross** GEORG AT or BLW FL110
 - Then track 257° to GOONY
 - Turn LEFT, track 170° to TALAG
 - **Cross** TALAG AT or ABV 5000FT
 - Track for VOR RWY 17
- RWY 35 ALPHA:**
- From RAZZI track 214° to SLICK
 - Track 214° to FOXLO
 - Turn RIGHT, track 249° to GIBIL, **MAX IAS 205KT** from GIBIL
 - Turn RIGHT, track 325° to MENZI For ILS, RNAV-Z (GNSS), LOC or VOR RWY 35 approach.

COMMUNICATIONS FAILURE: PROCEDURE IN IMC

- Squawk 7600, comply with vertical navigation requirements, but not below MSA.
- Track via the latest STAR clearance to the nominated runway, then fly the most suitable approach in accordance with ERSA EMERG Section 1.5.

Changes: FROM SUP H63/17, PROC NUMBER. SCBSR04-152