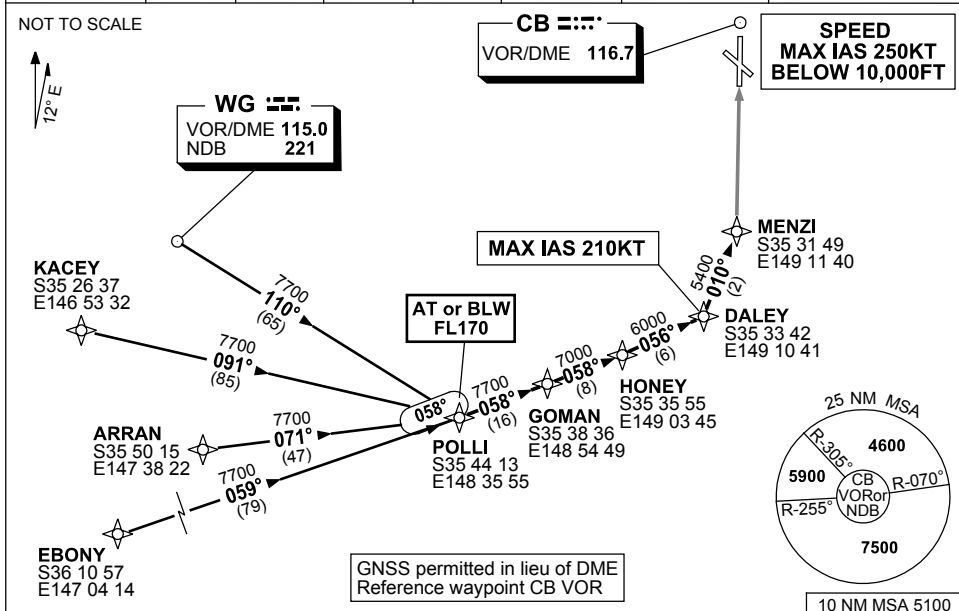


**STANDARD ARRIVAL ROUTE (STAR)
POLLI SEVEN ALPHA ARRIVAL (RNAV)
CANBERRA, ACT (YSCB)**

24 MAY 2018

ATIS 116.7 127.45 263	AWIS (AH) 116.7	APP 124.5	TWR 118.7	SMC/ACD 121.7	FIA (AH) ML CEN 125.9	CTAF+AFRU (AH) AFRU+PAL (AH) 118.7	Bearings are Magnetic Elevations in FEET AMSL
--------------------------	--------------------	--------------	--------------	------------------	--------------------------	--	--



TRANSITIONS:

WAGGA: From WG VOR to POLLI:
(WG)

- Track 110° to POLLI
- Then follow ARRIVAL instructions

ARRAN: From ARRAN to POLLI:

- Track 071° to POLLI
- Then follow ARRIVAL instructions

KACEY: From KACEY to POLLI:

- Track 091° to POLLI
- Then follow ARRIVAL instructions

EBONY: From EBONY to POLLI:

- Track 059° to POLLI
- Then follow ARRIVAL instructions

ARRIVAL: POLLI SEVEN

RWY 35 ALPHA:

- Cross** POLLI AT or BLW FL170
- From POLLI track 058° to GOMAN
 - Track 058° to HONEY
 - Track 056° to DALEY
 - **MAX IAS 210KT** from DALEY
 - Turn LEFT, track 010° to MENZI for ILS, RNAV-Z (GNSS), LOC, or VOR RWY 35 approach

COMMUNICATIONS FAILURE: PROCEDURE IN IMC

- Squawk 7600, comply with vertical navigation requirements, but not below MSA.
- Track via the latest STAR clearance to the nominated runway, then fly the most suitable approach in accordance with ERSA EMERG Section 1.5.

Changes: PROC NUMBER, AY TRANSITION DELETED.

SCBSR03-155