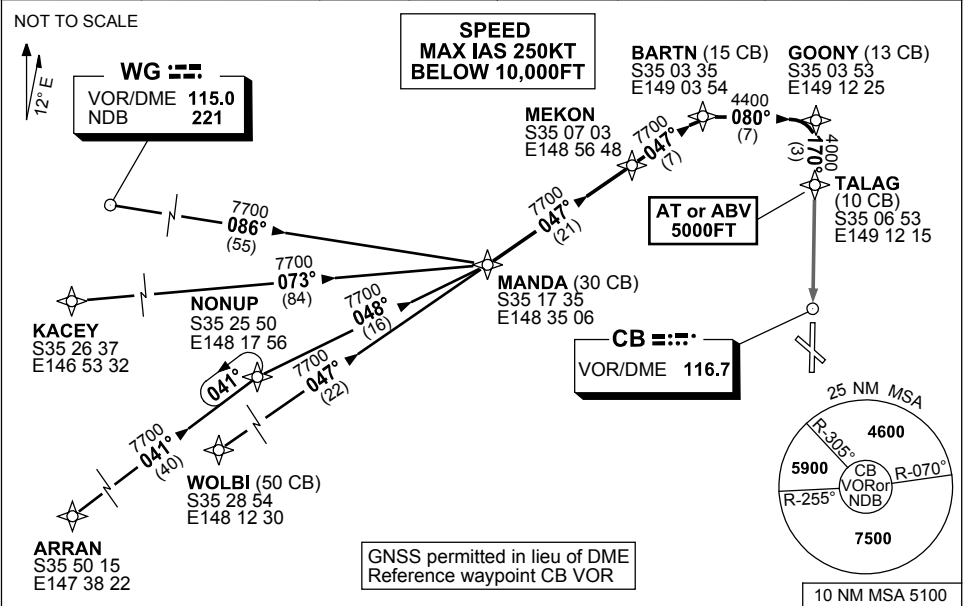


**STANDARD ARRIVAL ROUTE (STAR)
MANDA NINE BRAVO ARRIVAL (RNAV)
CANBERRA, ACT (YSCB)**

17 AUG 2017

ATIS 116.7 127.45 263	AWIS (AH) 116.7	APP 124.5	TWR 118.7	SMC/ACD 121.7	FIA (AH) ML CEN 125.9	CTAF+AFRU (AH) AFRU+PAL (AH) 118.7	Bearings are Magnetic Elevations in FEET AMSL
--------------------------	--------------------	--------------	--------------	------------------	--------------------------	--	--



TRANSITIONS:

- WAGGA:** From WG VOR to MANDA:
(WG)
• Track 086° to MANDA
• Then follow ARRIVAL instructions
- KACEY:** From KACEY to MANDA:
• Track 073° to MANDA
• Then follow ARRIVAL instructions

- ARRAN:** From ARRAN to MANDA:
• Track 041° to NONUP
• Turn RIGHT, track 048° to MANDA
• Then follow ARRIVAL instructions
- NONUP:** From NONUP to MANDA:
• Track 048° to MANDA
• Then follow ARRIVAL instructions
- WOLBI:** From WOLBI to MANDA:
• Track 047° to MANDA
• Then follow ARRIVAL instructions

ARRIVAL: MANDA NINE

- RWY 17 BRAVO:** From MANDA track 047° to MEKON
• Track 047° to BARTON
• Turn RIGHT, track 080° to GOONY
• Turn RIGHT, track 170° to TALAG
• Cross TALAG AT or ABV 5000FT
• Track via VOR RWY 17

COMMUNICATIONS FAILURE: PROCEDURE IN IMC

- Squawk 7600, comply with vertical navigation requirements, but not below MSA.
- Track via the latest STAR clearance to the nominated runway, then fly the most suitable approach in accordance with ERS A EMERG Section 1.5.