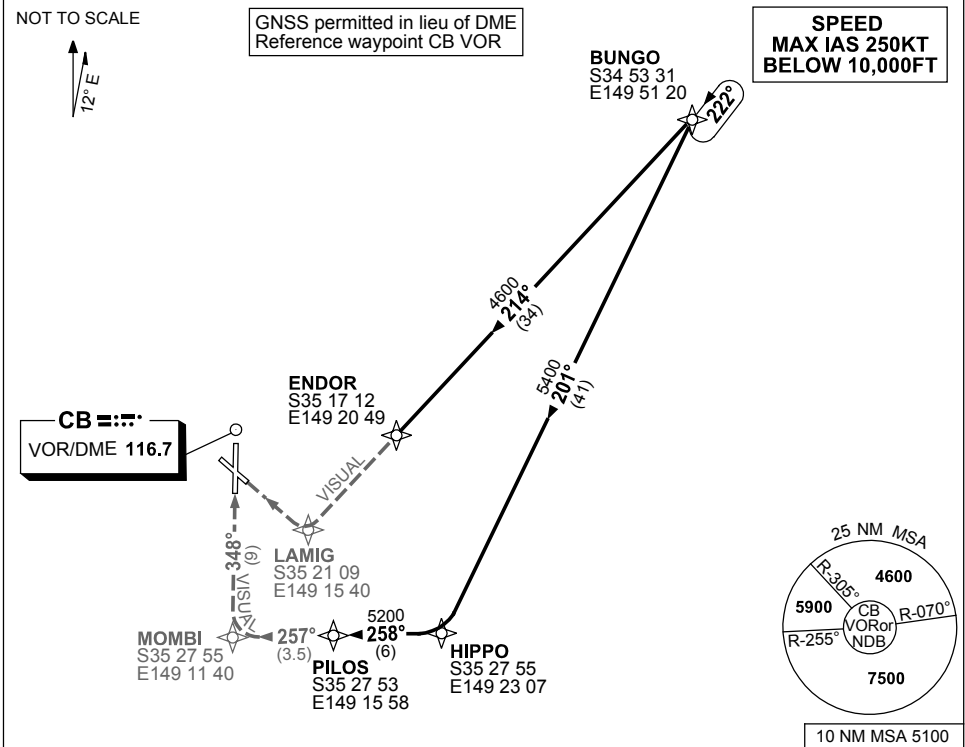


**STANDARD ARRIVAL ROUTE (STAR)  
BUNGO THREE VICTOR ARRIVAL (NON-JET) (RNAV)  
CANBERRA, ACT (YSCB)**

**2 MAR 2017**

ATIS 116.7 127.45 263	AWIS (AH) 116.7	APP 124.5	TWR 118.7	SMC/ACD 121.7	FIA (AH) ML CEN 125.9	CTAF+AFRU (AH) AFRU+PAL (AH) 118.7	Bearings are Magnetic Elevations in FEET AMSL
--------------------------	--------------------	--------------	--------------	------------------	--------------------------	--	--



**ARRIVAL: BUNGO THREE**

**RWY 30 VICTOR:**

- From BUNGO track 214° to ENDOR
- Track 214° VISUAL to LAMIG
- Turn RIGHT, intercept VISUAL final RWY 30

**RWY 35 VICTOR:**

**(HJ ONLY)**

- From BUNGO track 201° to HIPPO
- Turn RIGHT, track 258° to PILOS
- Track 257° VISUAL to MOMBI
- Turn RIGHT, intercept VISUAL final RWY 35

**COMMUNICATIONS FAILURE: PROCEDURE IN IMC**

- Squawk 7600, comply with vertical navigation requirements, but not below MSA.
- Track via the latest STAR clearance to the nominated runway, then fly the most suitable approach in accordance with ERS A EMERG Section 1.5.

Changes: PROC NAME.

SCBSR01-150