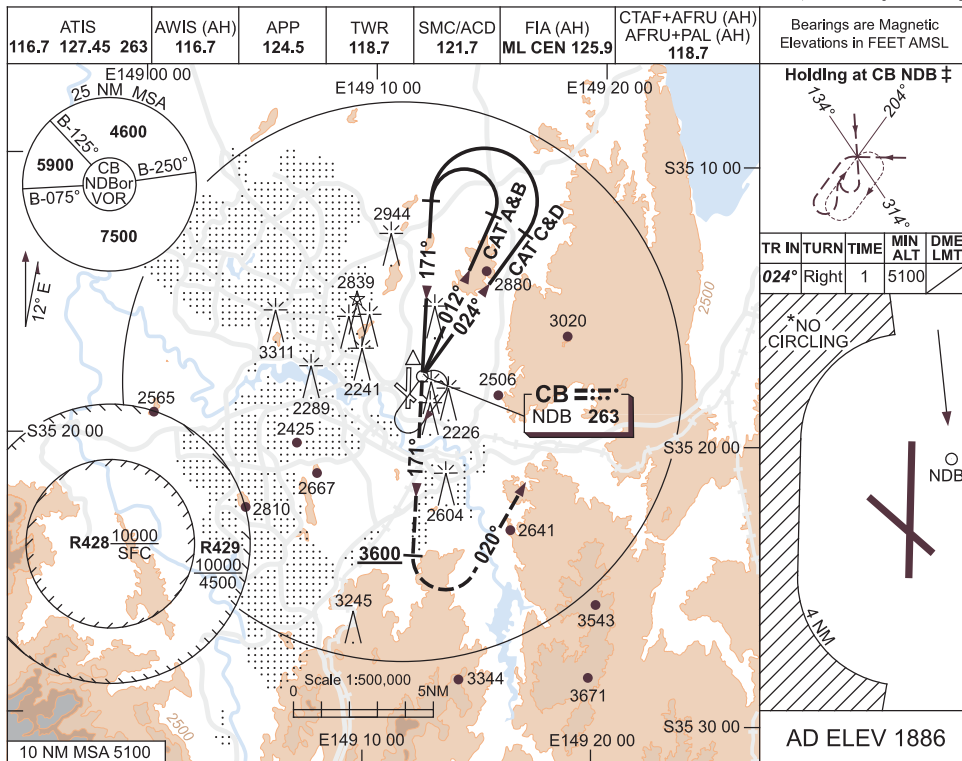


USE QNH

NDB-A

30 MAY 2013

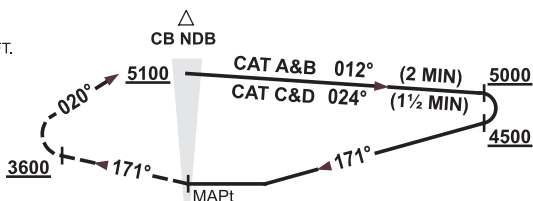
CANBERRA, ACT (YSCB)



DME DIST	NOT APPLICABLE					
ALT						

MISSED APPROACH:

TRACK 171°.
AT 3600FT TURN LEFT,
TRACK 020°.
CONTINUE CLIMB TO 5100FT.
OR AS DIRECTED BY ATC.



NOTES

CATEGORY	A	B	C	D
CIRCLING *	3350 (1464-2.4)		3580 (1694-4.0)	3720 (1834-5.0)
ALTERNATE	(1964-4.4)		(2194-6.0)	(2334-7.0)

- ‡ 1. MAX IAS :
INITIAL : 185KT.
HOLDING: 210KT.
- * 2. NO CIRCLING
BEYOND 4NM WEST
OF RWY 17/35.
- 3. COLOUR: SEE
SPEC NOTICES.

Changes: R428, R429.

SCBN01-135