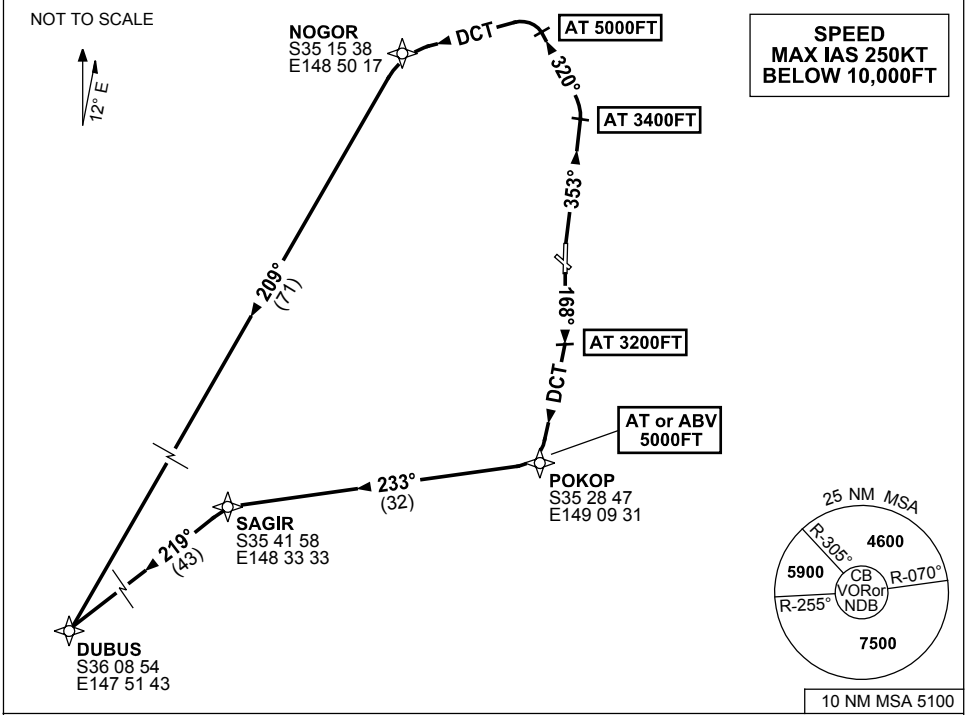


**STANDARD INSTRUMENT DEPARTURES (SID)
DUBUS ONE (NON-JET) (RNAV)
CANBERRA, ACT (YSCB)**

9 NOV 2017

ATIS 116.7 127.45 263	AWIS (AH) 116.7	SMC/ACD 121.7	TWR 118.7	DEP 125.9	FIA (AH) ML CEN 125.9	CTAF+AFRU (AH) AFRU+PAL (AH) 118.7	BRG are MAG ELEV in FT AMSL
--------------------------	--------------------	------------------	--------------	--------------	--------------------------	--	--------------------------------



DUBUS ONE DEPARTURE

RWY 35

- GRAD 6.6% to 3400FT thence 3.3%
- NOT BEFORE DER turn RIGHT track 353°
- At 3400FT turn LEFT, track 320°
- At 5000FT turn LEFT, track DCT to NOGOR
- Turn LEFT, track 209° to DUBUS, thence as cleared

RWY 17

- GRAD 4.9% to 4800FT thence 3.3%
- Track 168°
- AT 3200FT turn RIGHT track DCT to POKOP
- **Cross** POKOP AT or ABV 5000FT
- Turn RIGHT, track 233° to SAGIR
- Turn LEFT, track 219° to DUBUS, thence as cleared

Changes: SPEED REST.

SCBDP10-153