

**STANDARD INSTRUMENT DEPARTURES (SID)
AKMIR ONE (NON-JET) (RNAV)
CANBERRA, ACT (YSCB)**

9 NOV 2017

ATIS 116.7 127.45 263	AWIS (AH) 116.7	SMC/ACD 121.7	TWR 118.7	DEP 124.5	FIA (AH) ML CEN 125.9	CTAF+AFRU (AH) AFRU+PAL (AH) 118.7	BRG are MAG ELEV in FT AMSL
--------------------------	--------------------	------------------	--------------	--------------	--------------------------	--	--------------------------------

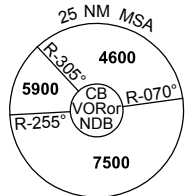
NOT TO SCALE



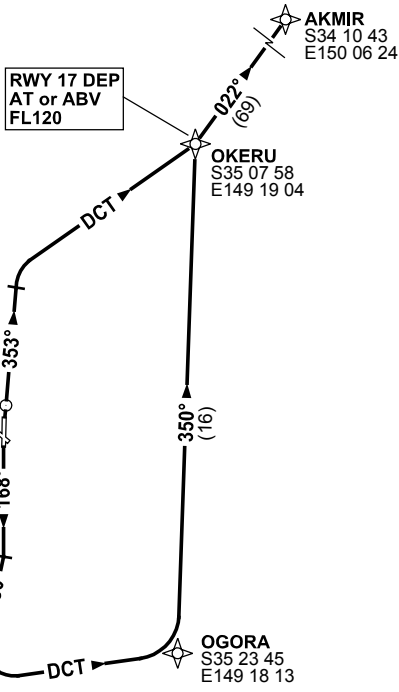
NOTE *
AT 5000FT
OUTSIDE TOWER
HOURS-NAP REF

AT 3400FT *
AT 5000FT SEE NOTE

CB ::::
VOR/DME 116.7



10 NM MSA 5100



**SPEED
MAX IAS 250KT
BELOW 10,000FT**

AKMIR ONE DEPARTURE

RWY 35

- GRAD 6.6% to 3400FT thence 3.3%
- NOT BEFORE DER turn RIGHT, track 353°
- AT 3400FT (5000FT - See NOTE *) turn RIGHT, track DCT to OKERU
- Turn LEFT, track 022° to AKMIR, thence as cleared

RWY 17

- GRAD 4.9% to 4800FT thence 3.3%
- Track 168°
- AT 3200FT turn RIGHT, track 180°
- AT 5000FT turn LEFT, track DCT to OKERA
- Turn LEFT, track 350° to OKERU
- **Cross** OKERU AT or ABV FL120
- Turn RIGHT, track 022° to AKMIR, thence as cleared

Changes: SPEED REST.

SCBDP07-153