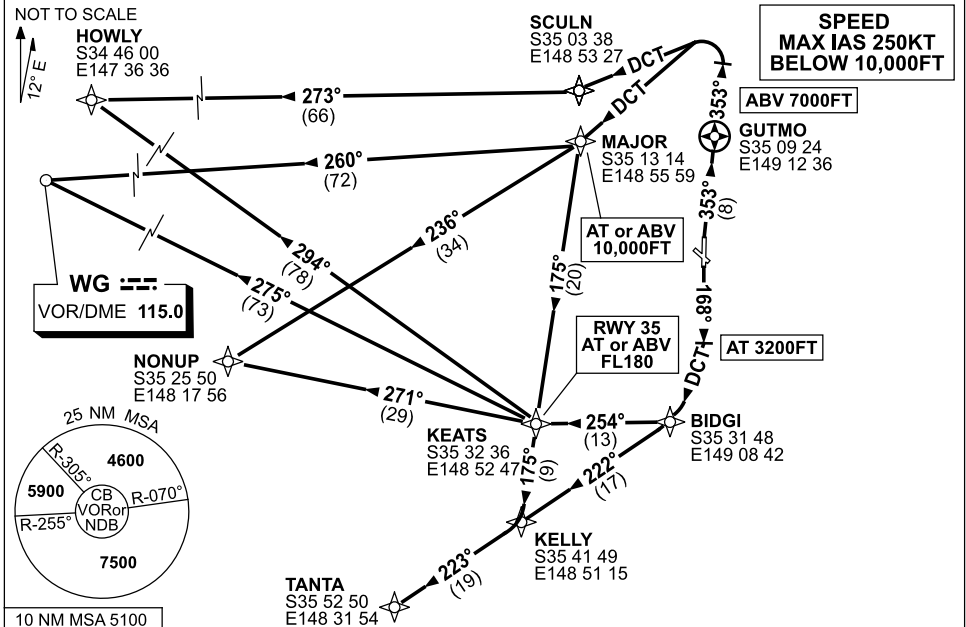


**STANDARD INSTRUMENT DEPARTURES (SID)
RWY 17/35 SOUTH & WEST (JET) (RNAV)
CANBERRA, ACT (YSCB)**

3 MAR 2016

ATIS 116.7 127.45 263	AWIS (AH) 116.7	SMC/ACD 121.7	TWR 118.7	DEP 125.9	FIA (AH) ML CEN 125.9	CTAF+AFRU (AH) AFRU+PAL (AH) 118.7	BRG are MAG ELEV in FT AMSL
--------------------------	--------------------	------------------	--------------	--------------	--------------------------	--	--------------------------------



HOWLY	SEVEN	DEPARTURE (RNAV)
WAGGA (WG)	NINE	DEPARTURE (RNAV)
NONUP	SEVEN	DEPARTURE (RNAV)
TANTA	ONE	DEPARTURE (RNAV)

RWY 35

- GRAD 6.6% to 3400FT thence 3.3%
- NOT BEFORE DER turn RIGHT
- Track 353° to GUTMO, thence 353°
- After passing GUTMO AND 7000FT, turn LEFT

For HOWLY

- Track DCT to SCULN
- Track 273° to HOWLY, thence as cleared

For WG

- Track DCT to MAJOR
- **Cross** MAJOR AT or ABV 10,000FT
- Track 260° to WG VOR, thence as cleared

For NONUP

- Track DCT to MAJOR
- **Cross** MAJOR AT or ABV 10,000FT
- Track 236° to NONUP, thence as cleared

For TANTA

- Track DCT to MAJOR
- **Cross** MAJOR AT or ABV 10,000FT
- Turn LEFT, track 175° to KEATS
- **Cross** KEATS AT or ABV FL180
- Track 175° to KELLY
- Turn RIGHT, track 223° to TANTA, thence as cleared

RWY 17

- GRAD 4.9% to 4800FT thence 3.3%
- Track 168°
- AT 3200FT turn RIGHT, track DCT to BIDGI (approx 180°)

For HOWLY

- At BIDGI turn RIGHT, track 254° to KEATS
- At KEATS turn RIGHT, track 294° to HOWLY, thence as cleared

For WG

- At BIDGI turn RIGHT, track 254° to KEATS
- At KEATS turn RIGHT, track 275° to WG VOR, thence as cleared

For NONUP

- At BIDGI turn RIGHT, track 254° to KEATS
- At KEATS turn RIGHT, track 271° to NONUP, thence as cleared

For TANTA

- Turn RIGHT, track 222° to KELLY,
- Track 223° to TANTA, thence as cleared

Changes: RWY 17 GRAD.

SCBDP06-146