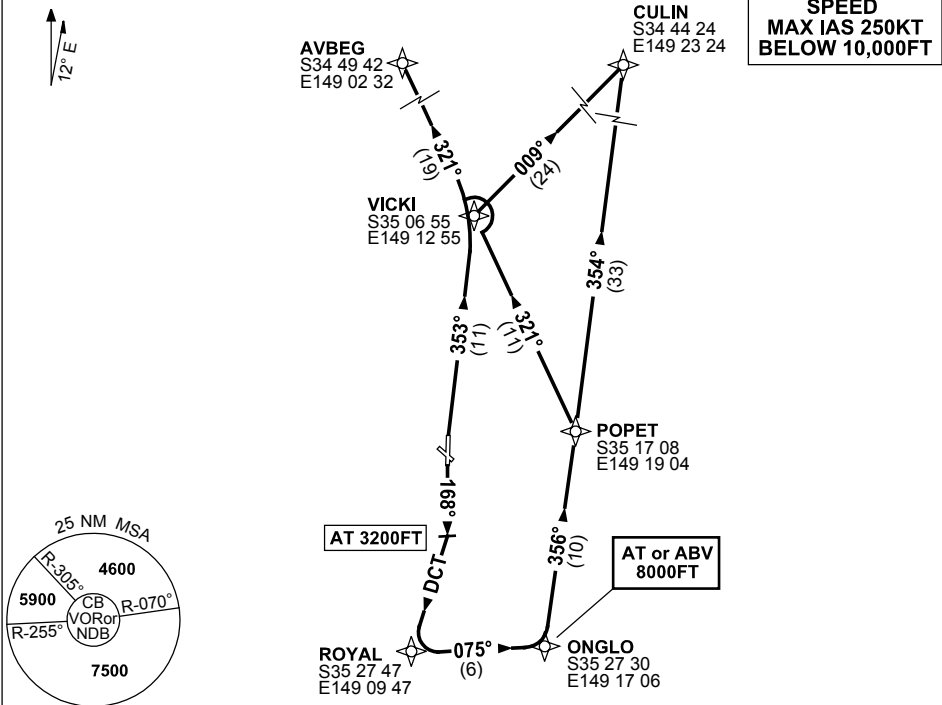


**STANDARD INSTRUMENT DEPARTURES (SID)
RWY 17/35 NORTH (JET) (RNAV)
CANBERRA, ACT (YSCB)**

9 NOV 2017

ATIS 116.7 127.45 263	AWIS (AH) 116.7	SMC/ACD 121.7	TWR 118.7	DEP RWY 17 DEP RWY 35 CULIN DEP RWY 35 YAS	124.5 124.5 125.9	FIA (AH) ML CEN 125.9	CTAF+AFRU (AH) AFRU+PAL (AH) 118.7	BRG are MAG ELEV in FT AMSL
--------------------------	--------------------	------------------	--------------	--	-------------------------	--------------------------	--	--------------------------------

NOT TO SCALE



**AVBEG ONE DEPARTURE (RNAV)
CULIN NINE DEPARTURE (RNAV)**

RWY 35

- GRAD 6.6% to 3400FT thence 3.3%
- NOT BEFORE DER turn RIGHT
- Track 353° to VICKI

From VICKI

For AVBEG

- Turn LEFT, track 321° to AVBEG thence as cleared

For CULIN

- Turn RIGHT, track 009° to CULIN, thence as cleared

RWY 17

- GRAD 4.9% to 4800FT thence 3.3%
- Track 168°
- AT 3200FT turn RIGHT,
- Track DCT to ROYAL (approx 180°)
- Turn LEFT, track 075° to ONGLO.
- **Cross ONGLO AT or ABV 8000FT**
- Turn LEFT, track 356° to POPET

From POPET

For AVBEG

- Turn LEFT, track 321° to AVBEG, thence as cleared

For CULIN

- Turn LEFT, track 354° to CULIN, thence as cleared