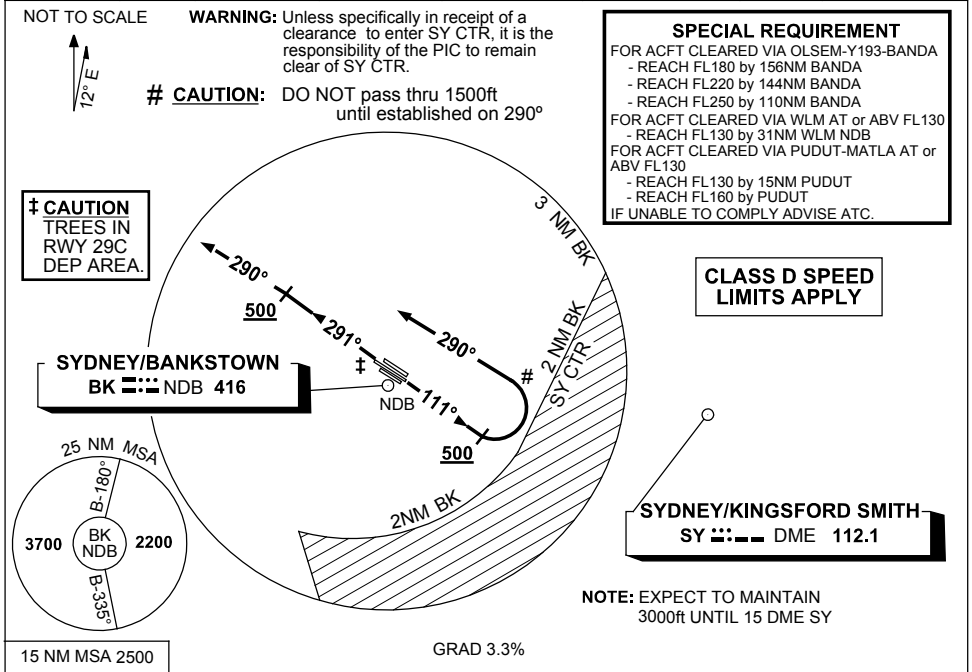


**STANDARD INSTRUMENT DEPARTURES (SID)  
BANKSTOWN NINE DEPARTURE RWY 11C/29C  
SYDNEY/BANKSTOWN, NSW (YSBK)**

**30 NOV 2023**

ATIS 120.9 416	SMC 119.9	TWR 123.6 132.8	DEP AS ADVISED	FIA (AH) SY CEN 125.8	CTAF+AFRU (AH) 132.8	PAL+AA 125.95	Bearings are MAG ELEV in FT AMSL
-------------------	--------------	--------------------	-------------------	--------------------------	-------------------------	------------------	-------------------------------------



**BANKSTOWN NINE DEPARTURE**  
PROC NOT AVBL FROM RWYS 11L/29R AND 11R/29L

**WARNING:** Unless specifically in receipt of a clearance to enter SY CTR, it is the responsibility of the PIC to remain clear of SY CTR.

**RWY 11C**

- Track 111°
- AT or ABV 500ft, turn LEFT track 290°
- Contact Departures when advised by Tower, or approaching controlled airspace

**# CAUTION:** DO NOT pass thru 1500ft until established on 290°

**RWY 29C**

- Track 291°
- AT or ABV 500ft, turn LEFT track 290°
- Contact Departures when advised by Tower, or approaching controlled airspace

**COMMUNICATIONS FAILURE PROCEDURE**

On recognition of communications failure

- Squawk 7600
- Maintain last procedure track for two minutes, and
- CLIMB IF NECESSARY TO MINIMUM SAFE ALTITUDE, to maintain terrain clearance, then
- proceed in accordance with the latest ATC route clearance acknowledged.

Changes: SPECIAL RQMNTS, NEW LOGO, Editorial.

SBKDP01-177