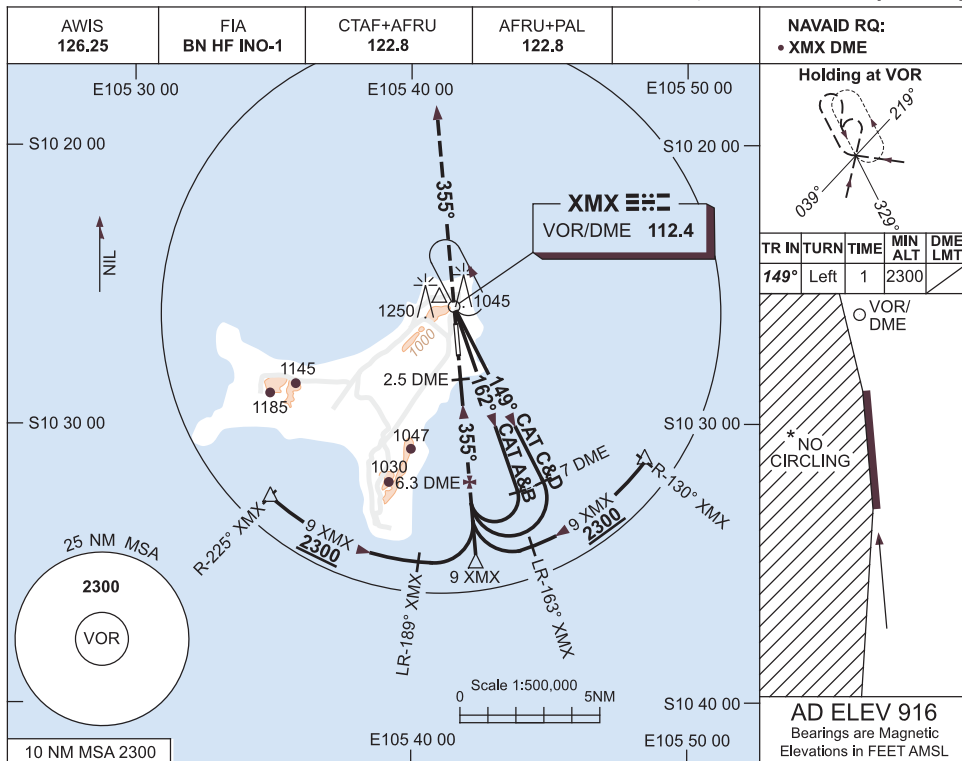


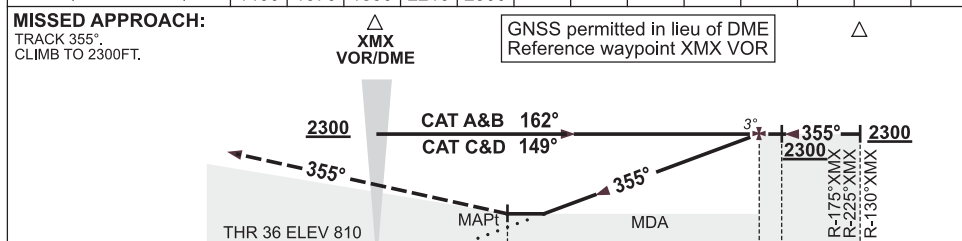
**USE QNH
CHRISTMAS ISLAND, AUSTRALIA (YPXM)**

VOR-Z RWY 36

13 NOV 2014



DIST BY DME	3.5	4	5	6	6.3								
ALT (3° APCH PATH)	1400	1570	1890	2210	2300								



NM BY DME: 0, 2.5, 6.3, 9

NOTES

CATEGORY	A	B	C	D
S-I VOR/DME	1400 (590-3.3)			
CIRCLING *	1650 (734-2.4)	1750 (834-4.0)	1750 (834-5.0)	
ALTERNATE	(1234-4.4)	(1334-6.0)	(1334-7.0)	

- MAX IAS:
INITIAL :
CAT A&B 140KT.
CAT C&D 210KT.
- NO CIRCLING WEST OF RWY 18/36.
- COLOUR: SEE SPEC NOTICES.

Changes: DIST/ALT SCALE, FINAL/MA TRACKS, HLDG BASE TURN TRACKS, FAF.

PXMV003-141