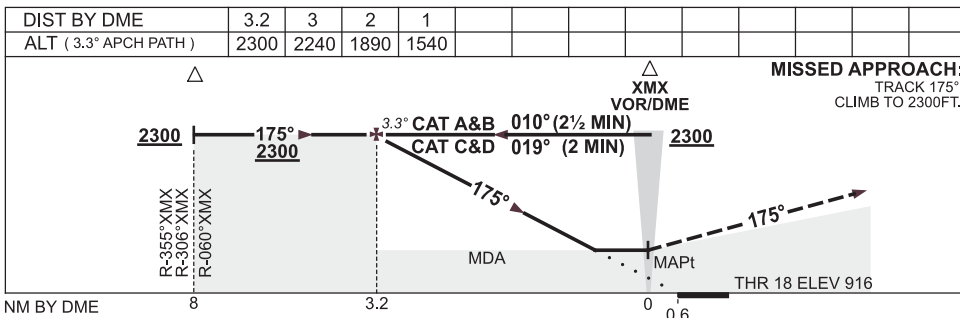
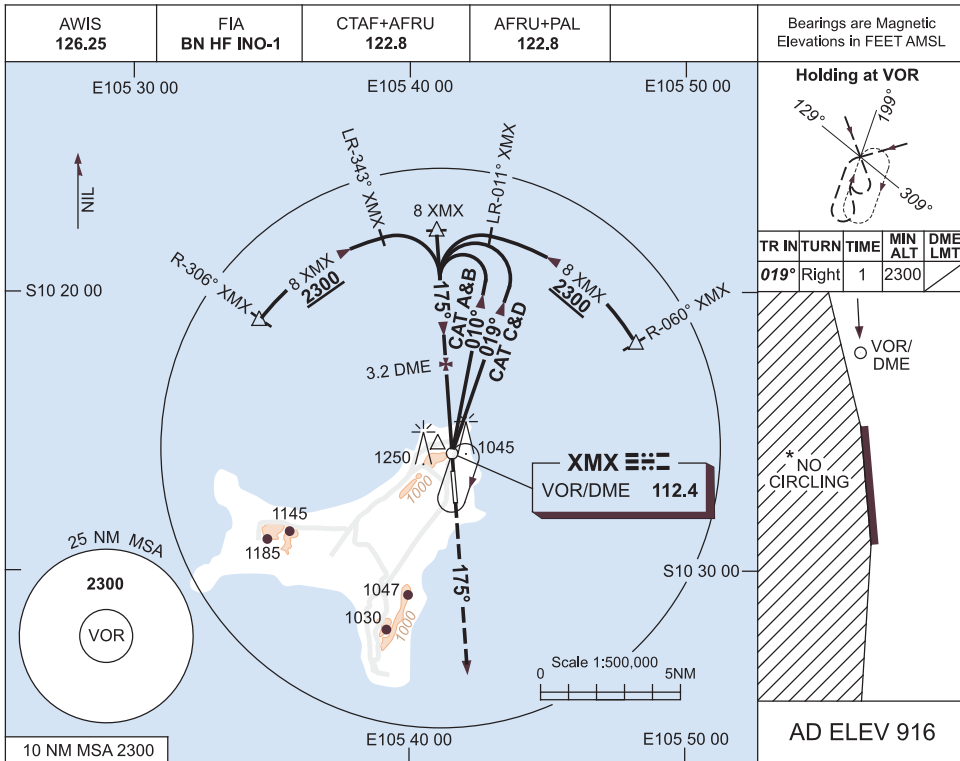


**USE QNH
CHRISTMAS ISLAND, AUSTRALIA (YPXM)**

VOR RWY 18

13 NOV 2014



NOTES

CATEGORY	A	B	C	D
S-I VOR		1540 (624-3.2)		
S-I VOR/DME		1540 (624-3.2)		
CIRCLING*	1650 (734-2.4)		1750 (834-4.0)	1750 (834-5.0)
ALTERNATE	(1234-4.4)		(1334-6.0)	(1334-7.0)

1. MAX IAS:
INITIAL : 210KT.
- *2. NO CIRCLING WEST
OF RWY 18/36.
3. COLOUR: SEE
SPEC NOTICES.

Changes: S-I MINIMA, FAF, HLDG TRACK, INBOUND/OUTBOUND TRACK, MA TRACK, DIST/ALT TRACK. PXMV001-141