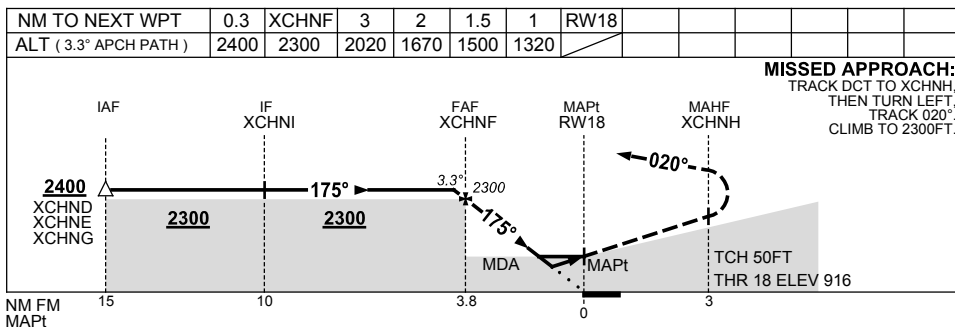
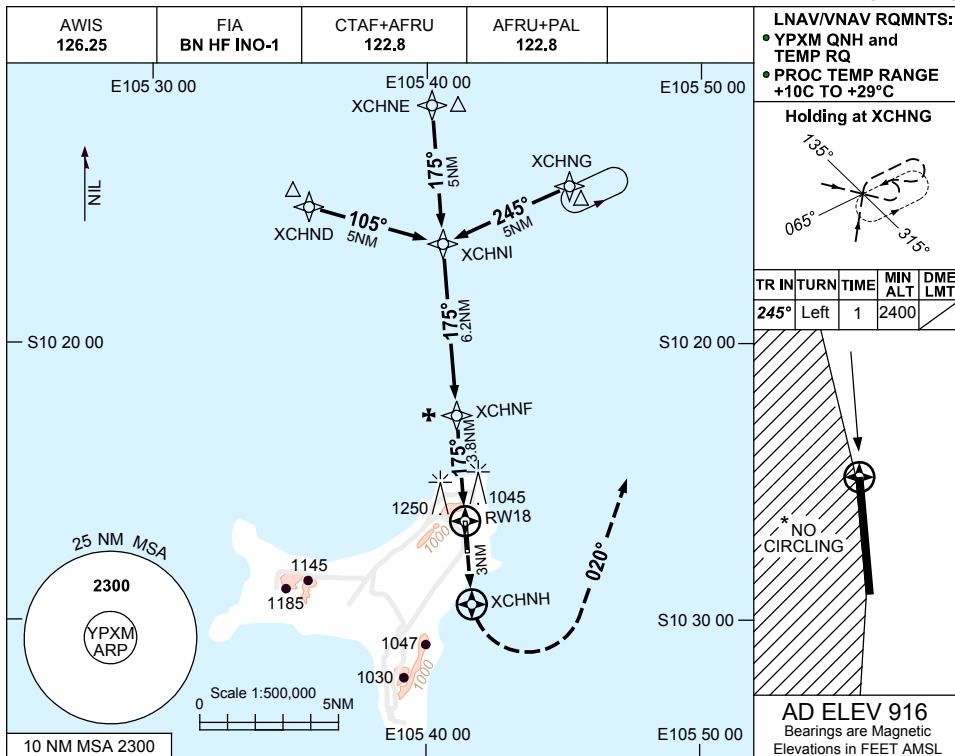


USE QNH RNAV (GNSS) RWY 18
CHRISTMAS ISLAND, AUSTRALIA (YPXM)

1 MAR 2018



NOTES

CATEGORY	A	B	C	D
LNAV/VNAV		1320 (404-2.1)		
LNAV		1500 (584-3.0)		
CIRCLING*	1650 (734-2.4)	1750 (834-4.0)	1750 (834-5.0)	
ALTERNATE	(1234-4.4)	(1334-6.0)	(1334-7.0)	

1. MAX IAS: INITIAL : 210KT.
- * 2. NO CIRCLING WEST OF RWY 18/36.
3. COLOUR: SEE SPEC NOTICES.

Changes: FROM SUP H148/17.

PXMGN01-154