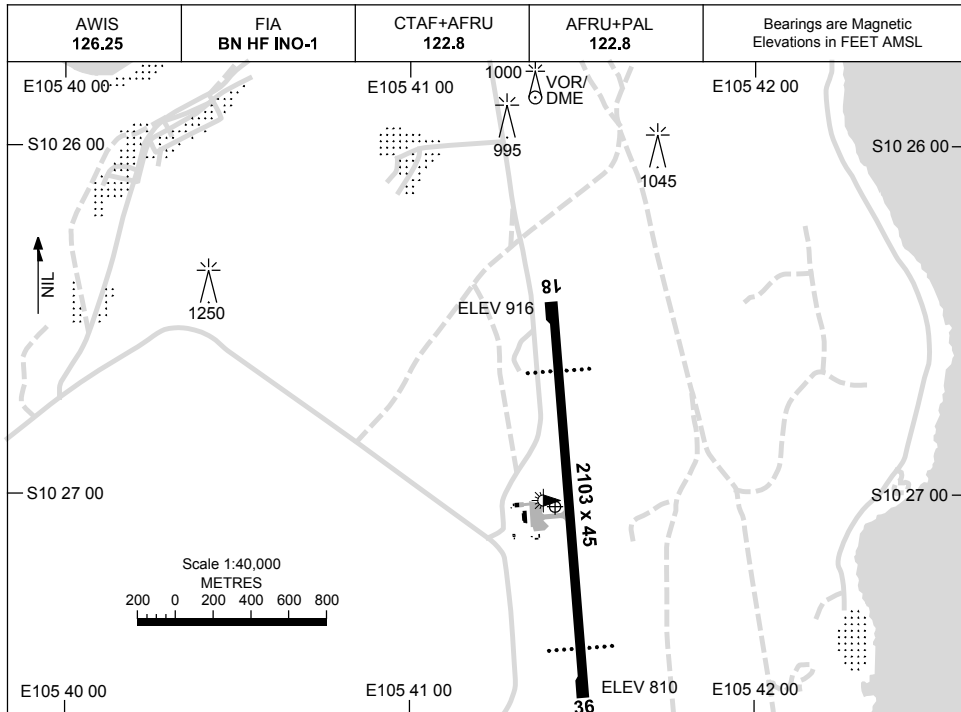


AD ELEV 916 S10 27 02 E105 41 25 **CHRISTMAS ISLAND, AUSTRALIA (YPXM)** AERODROME CHART

2 MAR 2017



	AERODROME LIGHTING
RWY	TAXIWAY : BLUE EDGE RL : AFRU+PAL 122.8 , MAN ON REQ , SDBY (15 SEC) , PTBL IN EMERG
18 <small>175</small>	PAPI (3) 3.3° 53FT LIRL
<small>355</small> 36	PAPI (3) 3.0° 53FT LIRL

NOTES

- RWY 36 RIGHT HAND CIRCUITS ONLY.
- ACFT ABV 36,000KG MTOW TO USE NODES FOR 180° TURNS.
ALL TURNS MNM SPEED, MAX RADIUS.

CAUTION: OLS EXTENSIVELY INFRINGED TO WEST OF RUNWAY AND EXTENDED.
CENTRELINE - CONFINE MANOEUVRING IN IMC OR NIGHT TO EAST OF RUNWAY.

Changes: THR IW1 DCMSD.

PXMAD01-150