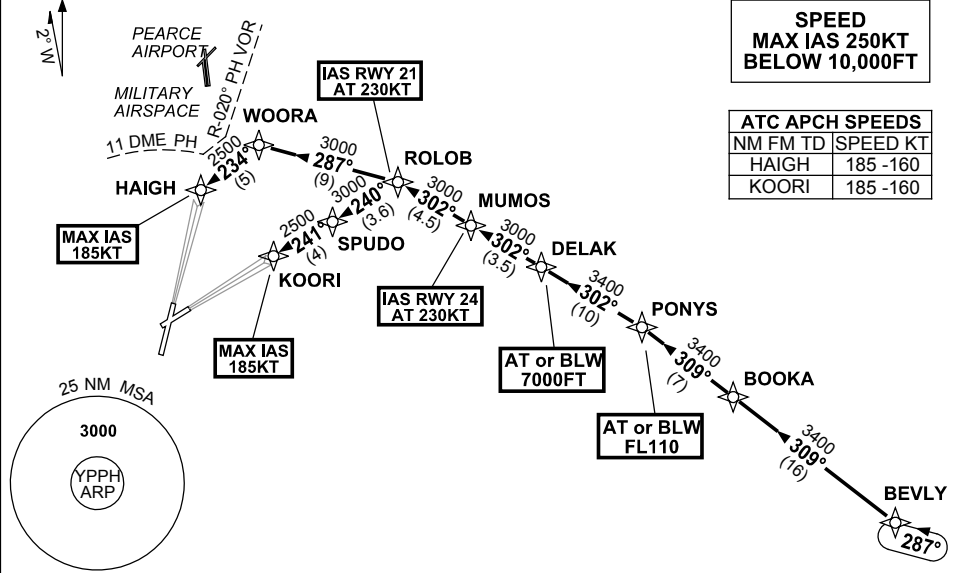


**STANDARD INSTRUMENT ARRIVAL (STAR)  
BEVLY FIVE ALPHA ARRIVALS (JET) (RNAV) RWY 21/24  
PERTH, WA (YPPH)**

**23 MAY 2019**

ATIS 113.7 123.8	APP 123.6	TWR 127.4	SMC E of RWY 03/21 122.2 W of RWY 03/21 121.7	Bearings are Magnetic Elevations in FEET AMSL
---------------------	--------------	--------------	---	--

NOT TO SCALE



**SPEED  
MAX IAS 250KT  
BELOW 10,000FT**

ATC APCH SPEEDS	
NM	FM TD
HAIGH	185 -160
KOORI	185 -160

10 NM MSA 2700

**ARRIVAL: BEVLY FIVE**

**RWY 21 ALPHA:**

- From BEVLY, track 309° to BOOKA
- Track 309° to PONYS  
**Cross** PONYS AT or BLW FL110
- Turn LEFT, track 302° to DELAK  
**Cross** DELAK AT or BLW 7000FT
- Track 302° to MUMOS
- Track 302° to ROLOB  
**IAS AT 230KT** from ROLOB
- Turn LEFT, track 287° to WOORA
- Turn LEFT, track 234° to HAIGH for ILS, RNAV-Z (GNSS) or LOC RWY 21 APPROACH  
**MAX IAS 185KT** from HAIGH

**RWY 24 ALPHA:**

- From BEVLY, track 309° to BOOKA
- Track 309° to PONYS  
**Cross** PONYS AT or BLW FL110
- Turn LEFT, track 302° to DELAK  
**Cross** DELAK AT or BLW 7000FT
- Track 302° to MUMOS  
**IAS AT 230KT** from MUMOS
- Track 302° to ROLOB
- Turn LEFT, track 240° to SPUDO
- Track 241° to KOORI for ILS, RNAV-Z (GNSS) or LOC RWY 24 APPROACH  
**MAX IAS 185KT** from KOORI

**COMMUNICATIONS FAILURE: PROCEDURE IN IMC**

- Squawk 7600, comply with vertical navigation requirements, but not below MSA.
- Track via the latest STAR clearance to the nominated runway, then fly the most suitable approach in accordance with ERSA EMERG Section 1.5.

Changes: PROC NAME/ NUMBER, Editorial.

PPHSR23-159