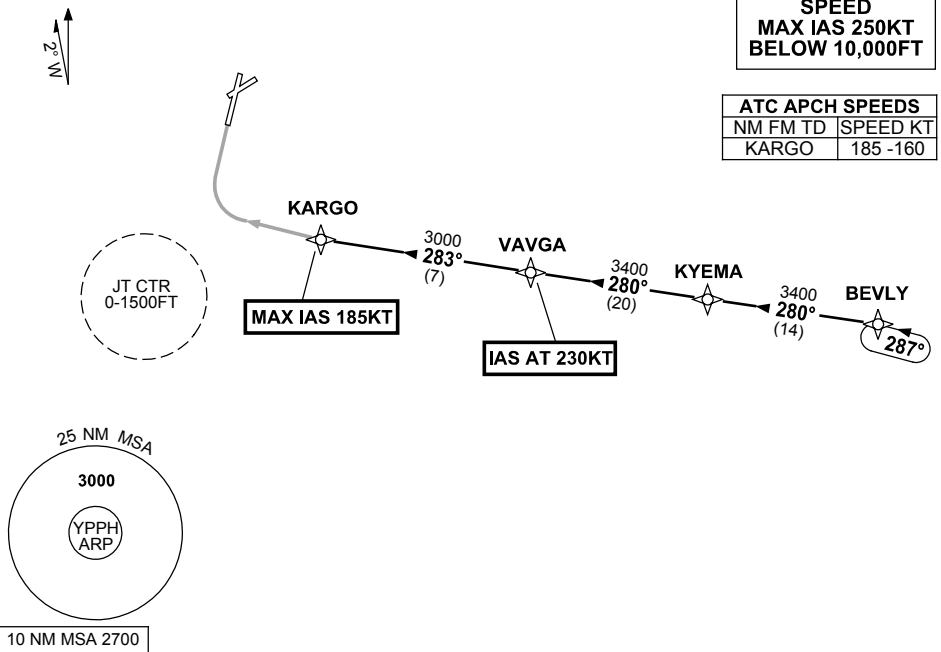


**STANDARD INSTRUMENT ARRIVAL (STAR)
BEVLY FIVE X-RAY ARRIVAL (JET) (RNAV)
PERTH, WA (YPPH)**

23 MAY 2019

ATIS 113.7 123.8	APP 123.6	TWR 127.4	SMC E of RWY 03/21 122.2 W of RWY 03/21 121.7	Bearings are Magnetic Elevations in FEET AMSL
---------------------	--------------	--------------	---	--

NOT TO SCALE



ARRIVAL:

BEVLY FIVE

- From BEVLY, track 280° to KYEMA,
- Track 280° to VAVGA,
IAS AT 230KT from VAVGA,
- Turn RIGHT, track 283° to KARGO,
MAX IAS 185KT from KARGO.

RWY 03 X-RAY: • From KARGO track via RNAV-X (RNP) RWY 03

COMMUNICATIONS FAILURE: PROCEDURE IN IMC

- Squawk 7600, comply with vertical navigation requirements, but not below MSA.
- Track via the latest STAR clearance to the nominated runway, then fly the most suitable approach in accordance with ERSA EMERG Section 1.5.

Changes: PROC NAME/NUMBER, Editorial.

PPHSR22-159