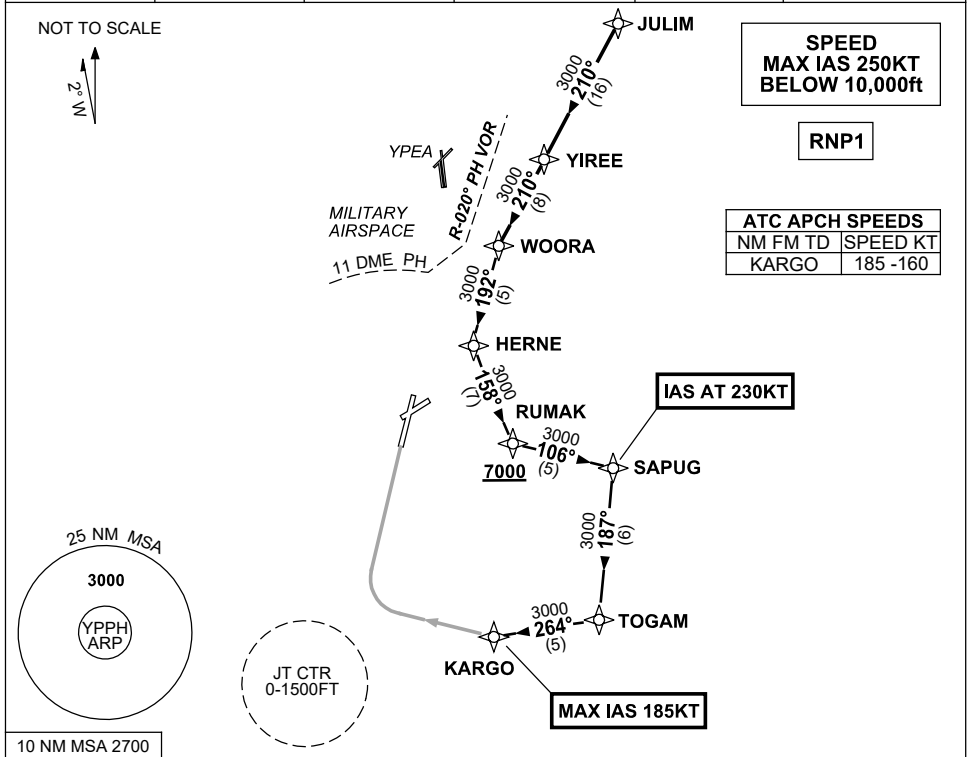


**STANDARD INSTRUMENT ARRIVAL (STAR)  
JULIM FIVE X-RAY ARRIVAL(JET) (RNAV)  
PERTH, WA (YPPH)**

**7 SEP 2023**

ATIS 113.7 123.8	APP 123.6 132.95	TWR 127.4	SMC E of RWY 03/21 122.2 W of RWY 03/21 121.7		Bearings are Magnetic Elevations in FEET AMSL
---------------------	---------------------	--------------	---	--	--



**ARRIVAL:**

**JULIM FIVE**

- From JULIM track 210° to YIREE,
- Track 210° to WOORA,
- Turn LEFT, track 192° to HERNE,
- Turn LEFT, track 158° to RUMAK,  
**Cross** RUMAK AT or ABV 7000ft,
- Turn LEFT, track 106° to SAPUG  
**IAS AT 230KT** from SAPUG
- Turn RIGHT, track 187° to TOGAM
- Turn RIGHT, track 264° to KARGO,  
**MAX IAS 185KT** from KARGO.

**RWY 03 X-RAY:**

- From KARGO turn RIGHT, track via RNP X RWY 03 (AR).

**COMMUNICATIONS FAILURE: PROCEDURE IN IMC**

- Squawk 7600, comply with vertical navigation requirements, but not below MSA.
- Track via the latest STAR clearance to the nominated runway, then fly the most suitable approach in accordance with ERSA EMERG Section 1.5.

Changes: Editorial.

PPHSR20-176