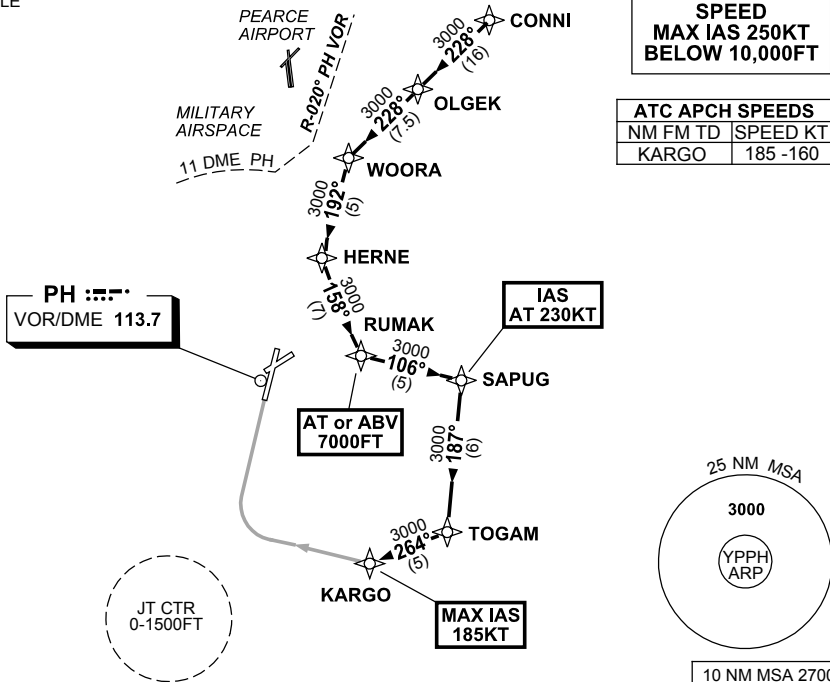


**STANDARD INSTRUMENT ARRIVAL (STAR)  
CONNI FOUR X-RAY ARRIVALS (NON-JET) (RNAV)  
PERTH, WA (YPPH)**

**23 MAY 2019**

ATIS 113.7 123.8	APP 123.6 132.95	TWR 127.4	SMC E of RWY 03/21 122.2 W of RWY 03/21 121.7	Bearings are Magnetic Elevations in FEET AMSL
---------------------	---------------------	--------------	---	--

NOT TO SCALE



**ARRIVAL:**

**CONNI FOUR**

- From CONNI track 228° to OLGEK,
- Track 228° to WOORA,
- Turn LEFT, track 192° to HERNE,
- Turn LEFT, track 158° to RUMAK,
- **Cross** RUMAK AT or ABV 7000FT,
- Turn LEFT, track 106° to SAPUG,
- **IAS** AT 230KT from SAPUG,
- Turn RIGHT, track 187° to TOGAM,
- Turn RIGHT, track 264° to KARGO,
- **MAX IAS** 185KT from KARGO.

**RWY 03 X-RAY:**

- From KARGO, turn RIGHT, track via RNAV-X (RNP) RWY 03

**COMMUNICATIONS FAILURE: PROCEDURE IN IMC**

- Squawk 7600, comply with vertical navigation requirements, but not below MSA.
- Track via the latest STAR clearance to the nominated runway, then fly the most suitable approach in accordance with ERS A EMERG Section 1.5.