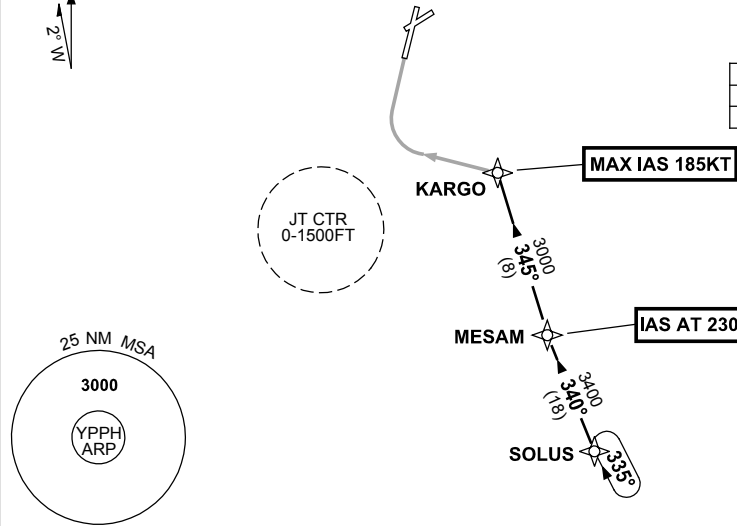


**STANDARD INSTRUMENT ARRIVAL (STAR)
SOLUS TWO X-RAY ARRIVAL (RNAV)
PERTH, WA (YPPH)**

23 MAY 2019

| | | | | |
|---------------------|--------------|--------------|---|--|
| ATIS 113.7 123.8 | APP 123.6 | TWR 127.4 | SMC E of RWY 03/21 122.2 W of RWY 03/21 121.7 | Bearings are Magnetic Elevations in FEET AMSL |
|---------------------|--------------|--------------|---|--|

NOT TO SCALE



**SPEED
MAX IAS 250KT
BELOW 10,000FT**

| ATC APCH SPEEDS | | |
|-----------------|----|----------|
| NM | FM | TD |
| KARGO | | 185 -160 |

10 NM MSA 2700

ARRIVAL:

SOLUS TWO

- From SOLUS track 340° to MESAM,
IAS AT 230KT from MESAM,
- Turn **RIGHT**, track 345° to KARGO,
MAX IAS 185KT from KARGO.

RWY 03 X-RAY: • From KARGO turn **LEFT**, track via RNAV-X (RNP) RWY 03

COMMUNICATIONS FAILURE: PROCEDURE IN IMC

- Squawk 7600, comply with vertical navigation requirements, but not below MSA.
- Track via the latest STAR clearance to the nominated runway, then fly the most suitable approach in accordance with ERSa EMERG Section 1.5.