

**STANDARD INSTRUMENT ARRIVAL (STAR)  
SOLUS TWO ALPHA ARRIVALS (RNAV)  
PERTH, WA (YPPH)**

**23 MAY 2019**

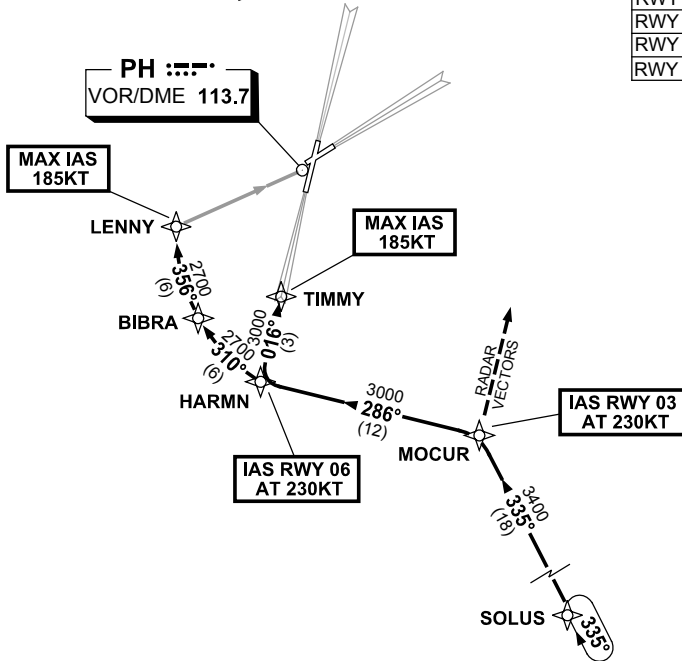
ATIS 113.7 123.8	APP 123.6	TWR 127.4	SMC E of RWY 03/21 122.2 W of RWY 03/21 121.7	Bearings are Magnetic Elevations in FEET AMSL
---------------------	--------------	--------------	---	--

NOT TO SCALE



**SPEED  
MAX IAS 250KT  
BELOW 10,000FT**

ATC APCH SPEEDS	
NM FM TD	SPEED KT
RWY 21/24 20NM	AT 230
RWY 03 TIMMY	185 -160
RWY 06 LENNY	185 -160
RWY 21/24 10NM	185 -160



10 NM MSA 2700

**ARRIVAL: SOLUS TWO**

**RWY 03 ALPHA:**

- From SOLUS, track 335° to MOCUR, **IAS AT 230KT** from MOCUR
- Turn LEFT, track 286° to HARMN,
- Turn RIGHT, track 016° to TIMMY,
- For ILS RNAV-Z (GNSS) or LOC RWY 03 APPROACH.

**RWY 21 ALPHA:**

- From SOLUS, track 335° to MOCUR, Expect radar vectors for ILS, RNAV-Z (GNSS) or LOC RWY 21 APPROACH.

**RWY 06 ALPHA:**

- From SOLUS, track 335° to MOCUR,
- Turn LEFT, track 286° to HARMN, **IAS AT 230KT** from HARMN
- Turn RIGHT, track 310° to BIBRA,
- Turn RIGHT, track 356° to LENNY for RNAV-Z (GNSS) or VOR RWY 06 APPROACH.

**RWY 24 ALPHA:**

- From SOLUS, track 335° to MOCUR, Expect radar vectors for ILS, RNAV-Z (GNSS) or LOC-RWY 24 APPROACH.

**COMMUNICATIONS FAILURE: PROCEDURE IN IMC**

- Squawk 7600, comply with vertical navigation requirements, but not below MSA.
- Track via the latest STAR clearance to the nominated runway, then fly the most suitable approach in accordance with ERSA EMERG Section 1.5.