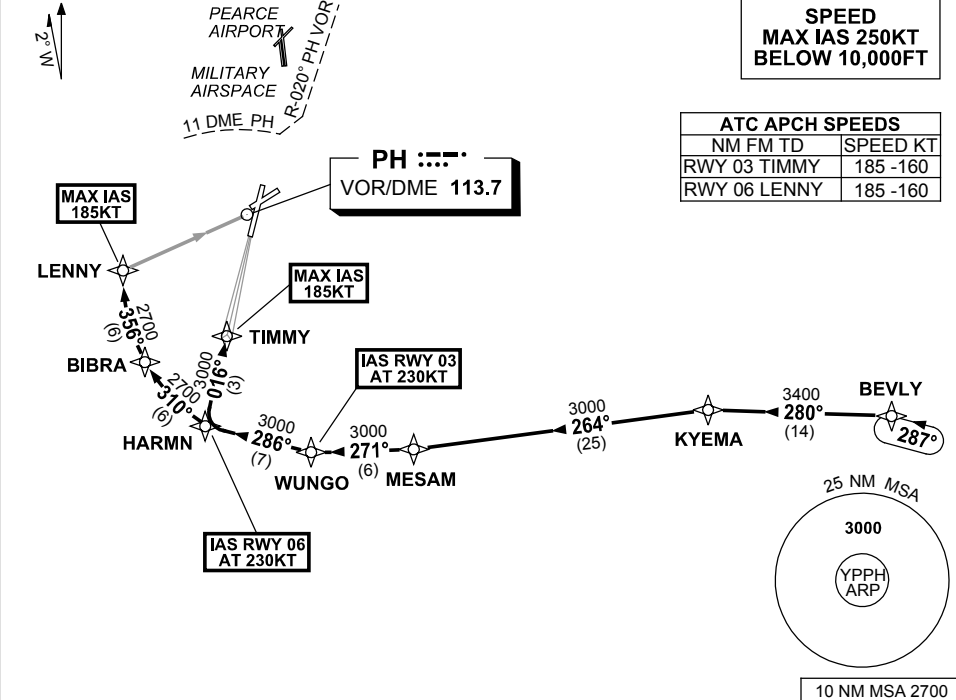


**STANDARD INSTRUMENT ARRIVAL (STAR)
BEVLY FIVE ALPHA ARRIVALS (JET) (RNAV) RWY 03/06
PERTH, WA (YPPH)**

23 MAY 2019

ATIS 113.7 123.8	APP 123.6	TWR 127.4	SMC E of RWY 03/21 122.2 W of RWY 03/21 121.7	Bearings are Magnetic Elevations in FEET AMSL
---------------------	--------------	--------------	---	--

NOT TO SCALE



ARRIVAL: BEVLY FIVE

RWY 03 ALPHA:

- From BEVLY, track 280° to KYEMA,
- Turn LEFT, track 264° to MESAM,
- Turn RIGHT, track 271° to WUNGO,
IAS AT 230KT from WUNGO,
- Turn RIGHT, track 286° to HARMN,
- Turn RIGHT, track 016° to TIMMY
for ILS, RNAV-Z (GNSS) or
LOC RWY 03 APPROACH.
MAX IAS 185KT from TIMMY,

RWY 06 ALPHA:

- From BEVLY, track 280° to KYEMA,
- Turn LEFT, track 264° to MESAM,
- Turn RIGHT, track 271° to WUNGO,
- Turn RIGHT, track 286° to HARMN,
IAS AT 230KT from HARMN,
- Turn RIGHT, track 310° to BIBRA,
- Turn RIGHT, track 356° to LENNY
for RNAV-Z (GNSS) or
VOR RWY 06 APPROACH.
MAX IAS 185KT from LENNY.

COMMUNICATIONS FAILURE: PROCEDURE IN IMC

- Squawk 7600, comply with vertical navigation requirements, but not below MSA.
- Track via the latest STAR clearance to the nominated runway, then fly the most suitable approach in accordance with ERSA EMERG Section 1.5.