

**STANDARD INSTRUMENT ARRIVAL (STAR)
GRENE FIVE X-RAY ARRIVAL (NON-JET) (RNAV)
PERTH, WA (YPPH)**

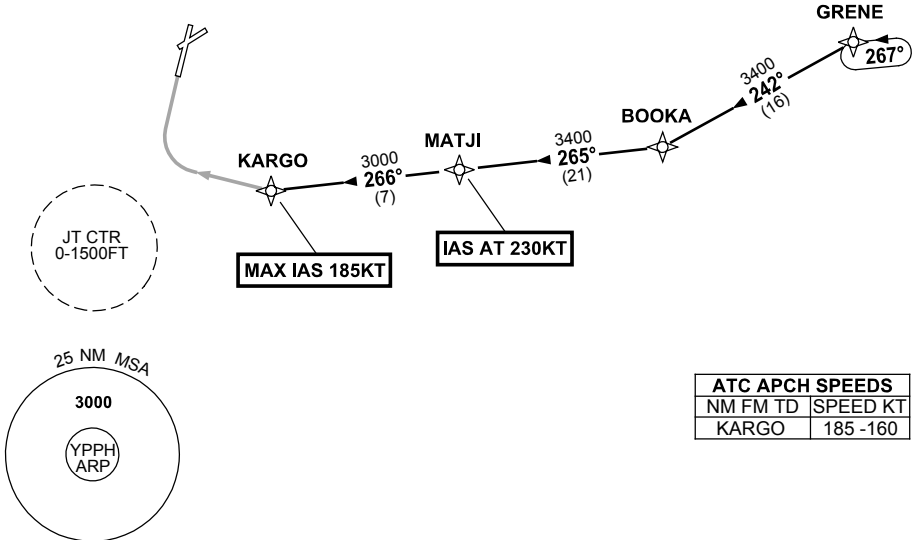
23 MAY 2019

ATIS 113.7 123.8	APP 123.6	TWR 127.4	SMC E of RWY 03/21 122.2 W of RWY 03/21 121.7	Bearings are Magnetic Elevations in FEET AMSL
---------------------	--------------	--------------	---	--

NOT TO SCALE



**SPEED
MAX IAS 250KT
BELOW 10,000FT**



ATC APCH SPEEDS	
NM FM TD	SPEED KT
KARGO	185 -160

10 NM MSA 2700

ARRIVAL: GRENE FIVE

- From GRENE, track 242° to BOOKA,
- Turn RIGHT, track 265° to MATJI,
IAS AT 230KT from MATJI,
- Turn RIGHT, track 266° to KARGO,
MAX IAS 185KT from KARGO.

RWY 03 X-RAY: • From KARGO turn RIGHT, track via RNAV-X (RNP) RWY 03

COMMUNICATIONS FAILURE: PROCEDURE IN IMC

- Squawk 7600, comply with vertical navigation requirements, but not below MSA.
- Track via the latest STAR clearance to the nominated runway, then fly the most suitable approach in accordance with ERSA EMERG Section 1.5.

Changes: PROC NAME/NUMBER, Editorial.

PPHSR06-159