

**STANDARD INSTRUMENT ARRIVAL (STAR)
GRENE FIVE VICTOR ARRIVAL (NON-JET) (RNAV)
PERTH, WA (YPPH)**

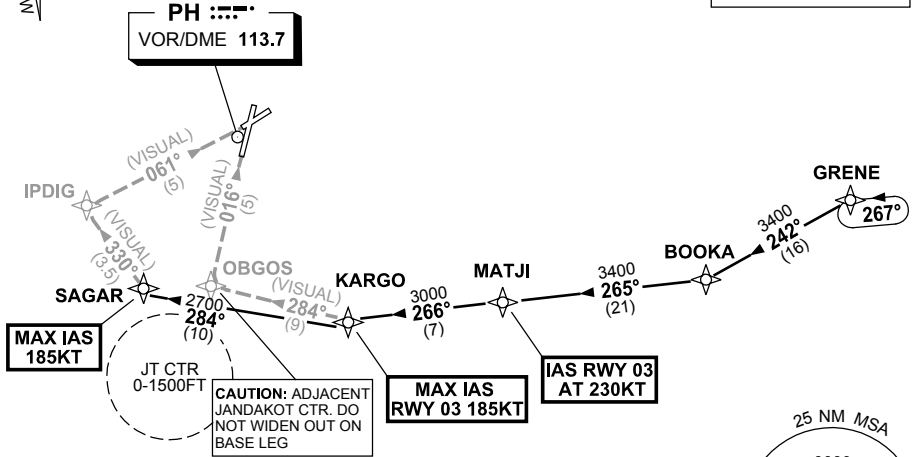
23 MAY 2019

ATIS 113.7 123.8	APP 123.6	TWR 127.4	SMC E of RWY 03/21 122.2 W of RWY 03/21 121.7	Bearings are Magnetic Elevations in FEET AMSL
---------------------	--------------	--------------	---	--

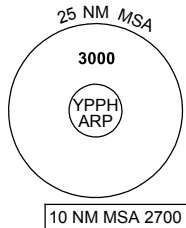
NOT TO SCALE



**SPEED
MAX IAS 250KT
BELOW 10,000FT**



ATC APCH SPEEDS	
NM FM TD	SPEED KT
RWY 03 MATJI	AT 230
RWY 06 20NM	AT 230
RWY 03 KARGO	185-160
RWY 06 SAGAR	185-160
5	160-150



ARRIVAL:

GRENE FIVE

- From GRENE, track 242° to BOOKA,
- Turn RIGHT, track 265° to MATJI,
 IAS RWY 03 AT 230KT from MATJI,
- Turn RIGHT, track 266° to KARGO,
 MAX IAS RWY 03 185KT from KARGO

RWY 03 VICTOR:

- From KARGO turn RIGHT, track 284° VISUAL to OBGOS for VISUAL final RWY 03

RWY 06 VICTOR:

- From KARGO turn RIGHT, track 284° to SAGAR
 MAX IAS 185KT from SAGAR
- Turn RIGHT, track 330° VISUAL to IPDIG for VISUAL final RWY 06

COMMUNICATIONS FAILURE: PROCEDURE IN IMC

- Squawk 7600, comply with vertical navigation requirements, but not below MSA.
- Track via the latest STAR clearance to the nominated runway, then fly the most suitable approach in accordance with ERSA EMERG Section 1.5.

Changes: PROC NAME/NUMBER, SAGAR SPEED RESTRICTION, Editorial.

PPHSR05-159