

**STANDARD INSTRUMENT ARRIVAL (STAR)  
JULIM FIVE ALPHA ARRIVALS (JET) (RNAV) RWY 03/06  
PERTH, WA (YPPH)**

**23 MAY 2019**

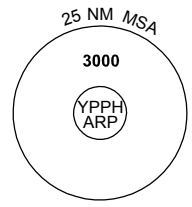
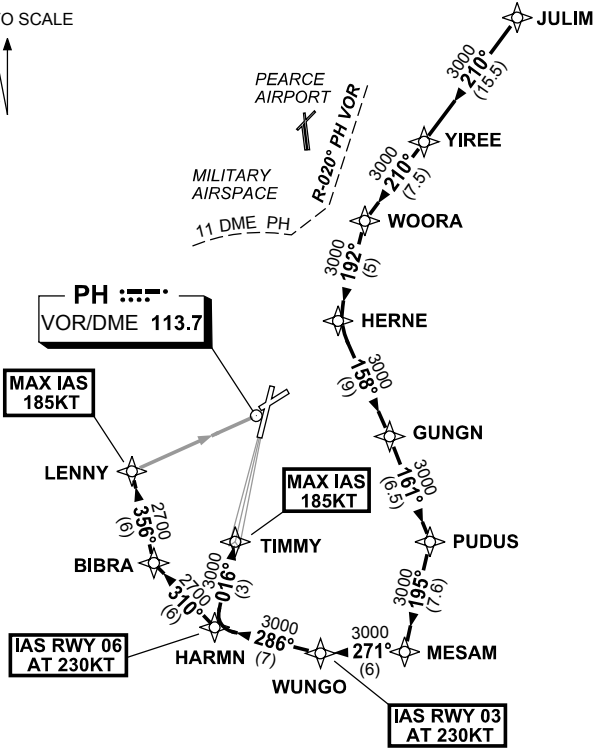
ATIS 113.7 123.8	APP 123.6 132.95	TWR 127.4	SMC E of RWY 03/21 122.2 W of RWY 03/21 121.7	Bearings are Magnetic Elevations in FEET AMSL
---------------------	---------------------	--------------	---	--

NOT TO SCALE



**SPEED  
MAX IAS 250KT  
BELOW 10,000FT**

ATC APCH SPEEDS		
NM	FM	TD
RWY 03	TIMMY	185 -160
RWY 06	LENNY	185 -160



**ARRIVAL: JULIM FIVE**

**RWY 03 ALPHA:**

- From JULIM, track 210° to YIREE,
- Track 210° to WOORA,
- Turn LEFT, track 192° to HERNE,
- Turn LEFT, track 158° to GUNGN,
- Turn RIGHT, track 161° to PUDUS
- Turn RIGHT, track 195° to MESAM,
- Turn RIGHT, track 271° to WUNGO,  
**IAS AT 230KT** from WUNGO
- Turn RIGHT, track 286° to HARMN,
- Turn RIGHT, track 016° to TIMMY,  
for ILS, RNAV-Z (GNSS) or  
LOC RWY 03 APPROACH,  
**MAX IAS 185KT** from TIMMY.

**RWY 06 ALPHA:**

- From JULIM, track 210° to YIREE,
- Track 210° to WOORA,
- Turn LEFT, track 192° to HERNE,
- Turn LEFT, track 158° to GUNGN,
- Turn RIGHT, track 161° to PUDUS
- Turn RIGHT, track 195° to MESAM,
- Turn RIGHT, track 271° to WUNGO,
- Turn RIGHT, track 286° to HARMN,  
**IAS AT 230KT** from HARMN,
- Turn RIGHT, track 310° to BIBRA,
- Turn RIGHT, track 356° to LENNY,  
for RNAV-Z (GNSS) or  
VOR RWY 06 APPROACH,  
**MAX IAS 185KT** from LENNY.

**COMMUNICATIONS FAILURE: PROCEDURE IN IMC**

- Squawk 7600, comply with vertical navigation requirements, but not below MSA.
- Track via the latest STAR clearance to the nominated runway, then fly the most suitable approach in accordance with ERSA EMERG Section 1.5.

Changes: PROC NAME/NUMBER, Editorial.

PPHSR04-159