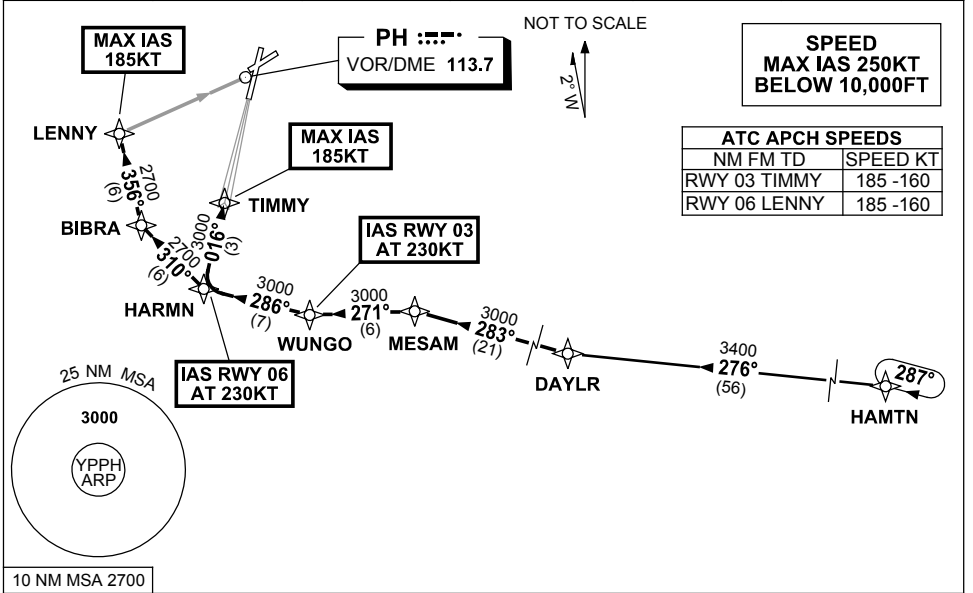


**STANDARD INSTRUMENT ARRIVAL (STAR)
DAYLR FOUR ALPHA ARRIVALS (NON-JET) (RNAV)
PERTH, WA (YPPH)**

23 MAY 2019

ATIS 113.7 123.8	APP 123.6	TWR 127.4	SMC E of RWY 03/21 122.2 W of RWY 03/21 121.7	Bearings are Magnetic Elevations in FEET AMSL
---------------------	--------------	--------------	-----------------------------------------------------	--------------------------------------------------



TRANSITIONS:

HAMTN: From HAMTN to DAYLR,
Track 276° to DAYLR,
Then follow ARRIVAL instructions.

ARRIVAL: DAYLR FOUR

RWY 03 ALPHA: From DAYLR, track 283° to MESAM,
• Turn LEFT, track 271° to WUNGO,
IAS AT 230KT from WUNGO,
• Turn RIGHT, track 286° to HARMN,
• Turn RIGHT, track 016° to TIMMY,
for ILS, RNAV-Z (GNSS) or LOC RWY 03 APPROACH.
MAX IAS 185KT from TIMMY,

RWY 06 ALPHA: From DAYLR, track 283° to MESAM,
• Turn LEFT, track 271° to WUNGO,
• Turn RIGHT, track 286° to HARMN,
IAS AT 230KT from HARMN,
• Turn RIGHT, track 310° to BIBRA,
• Turn RIGHT, track 356° to LENNY,
for RNAV-Z (GNSS) or VOR RWY 06 APPROACH.
MAX IAS 185KT from LENNY.

COMMUNICATIONS FAILURE: PROCEDURE IN IMC

- Squawk 7600, comply with vertical navigation requirements, but not below MSA.
- Track via the latest STAR clearance to the nominated runway, then fly the most suitable approach in accordance with ERS A EMERG Section 1.5.