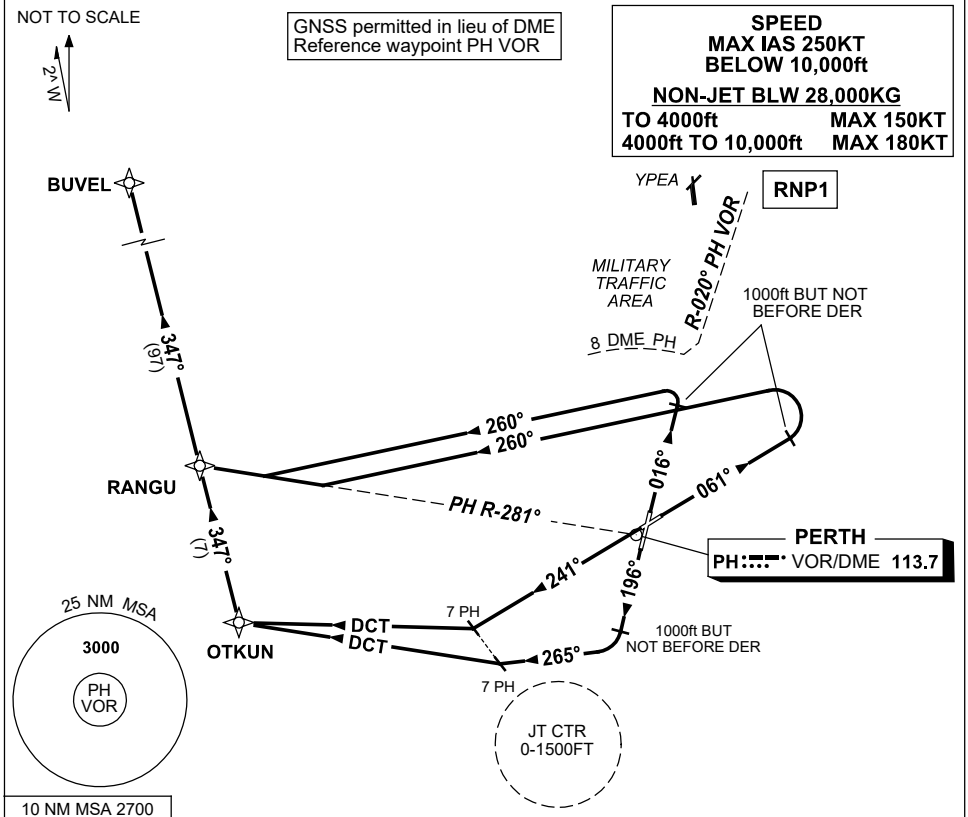


STANDARD INSTRUMENT DEPARTURES (SID) RWYS WEST (NON-JET) (RNAV) PERTH, WA (YPPH)

7 SEP 2023

ATIS 113.7 123.8	ACD 118.55	SMC E of RWY 03/21 122.2 W of RWY 03/21 121.7	TWR 127.4	DEP 118.7	Bearings are Magnetic Elevations in FEET AMSL
---------------------	---------------	-----------------------------------------------------	--------------	--------------	--------------------------------------------------



RANGU NINE DEPARTURE

RWY 03

- GRAD 3.3%
- Track 016°
- AT 1000ft but not before DER (1.1 DME)
- Turn LEFT, track 260°
- Intercept and track PH R-281° to RANGU:

RWY 06

- GRAD 4.0% to 2800ft
- Track 061°
- AT 1000ft but not before DER (1.3DME)
- Turn LEFT, track 260°
- Intercept and track PH R-281° to RANGU:

AT RANGU

- Turn RIGHT, track 347° to BUVEL, thence as cleared

OTKUN TWO DEPARTURE

RWY 21

- GRAD 3.7% to 2800ft
- Track 196°
- AT 1000ft but not before DER (0.8 DME)
- Turn RIGHT, track 265°
- At 7 DME track DCT to OTKUN

RWY 24

- GRAD 3.7% to 2800ft
- Track 241°
- At 7 DME turn RIGHT
- Track DCT to OTKUN

From OTKUN

- Turn RIGHT, track 347° to RANGU
- Track 347° to BUVEL, thence as cleared

Changes: RWY 06/24 INITIAL TRACKS, Editorial.

PPHDP13-176