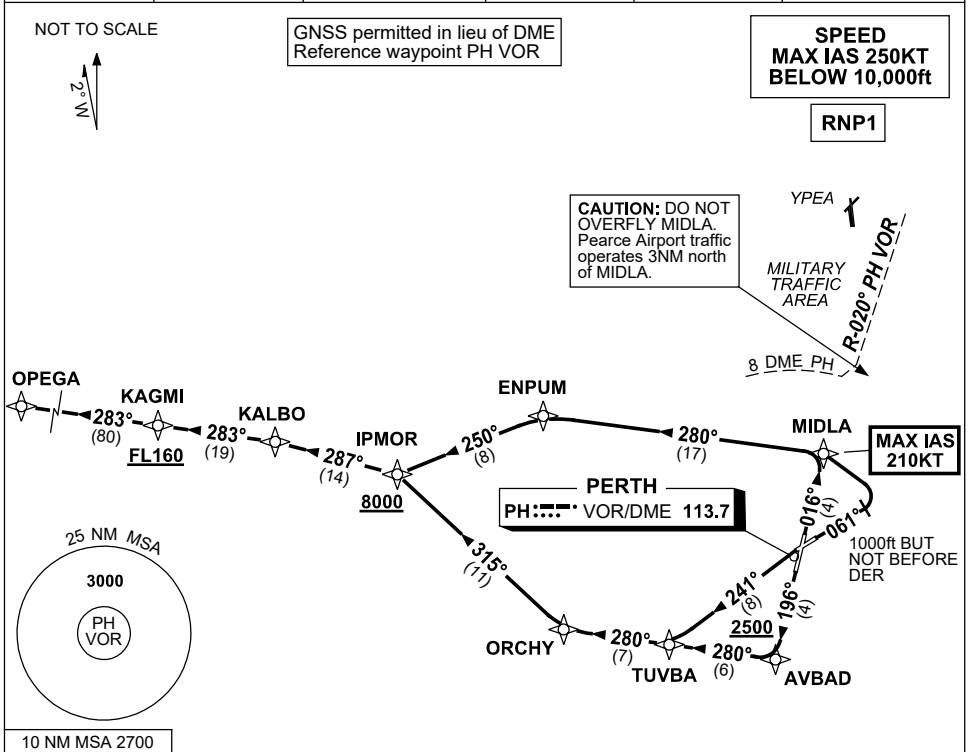


STANDARD INSTRUMENT DEPARTURES (SID) OPEGA ONE (RNAV) PERTH, WA (YPPH)

30 NOV 2023

ATIS 113.7 123.8	ACD 118.55	SMC E of RWY 03/21 122.2 W of RWY 03/21 121.7	TWR 127.4	DEP 118.7	Bearings are Magnetic Elevations in FEET AMSL
---------------------	---------------	---	--------------	--------------	--



OPEGA ONE DEPARTURE

RWY 03

- GRAD 3.3% (4.7% to 8000ft)
- MAX IAS 210KT UNTIL MIDLA**
- Track 016° to MIDLA

RWY 06

- GRAD 4.0% to 2800ft (4.7% to 8000ft)
- MAX IAS 210KT UNTIL MIDLA**
- Track 061°
- AT 1000ft but not before DER (1.3 DME) turn LEFT
- Track DCT to MIDLA

From MIDLA

- Turn LEFT, track 280° to ENPUM
- Turn LEFT, track 250° to IPMOR
- Cross IPMOR AT or ABV 8000ft**
- Turn RIGHT, track 287° to KALBO
- Turn LEFT, track 283° to KAGMI
- Cross KAGMI AT or ABV FL160**
- Track 283° to OPEGA, thence as cleared

RWY 21

- GRAD 3.7% to 2800ft (4.7% to 8000ft)
- Track 196° to AVBAD
- Cross AVBAD AT or ABV 2500ft**
- Turn RIGHT, track 280° to TUVBA

RWY 24

- GRAD 3.7% to 2800ft (4.7% to 8000ft)
- Track 241° to TUVBA

From TUVBA

- Track 280° to ORCHY
- Turn RIGHT, track 315° to IPMOR
- Cross IPMOR AT or ABV 8000ft**
- Turn LEFT, track 287° to KALBO
- Turn LEFT, track 283° to KAGMI
- Cross KAGMI AT or ABV FL160**
- Track 283° to OPEGA, thence as cleared

Changes: WAYPOINT NAMES, CHART TITLE, Editorial.

PPHDP08-177