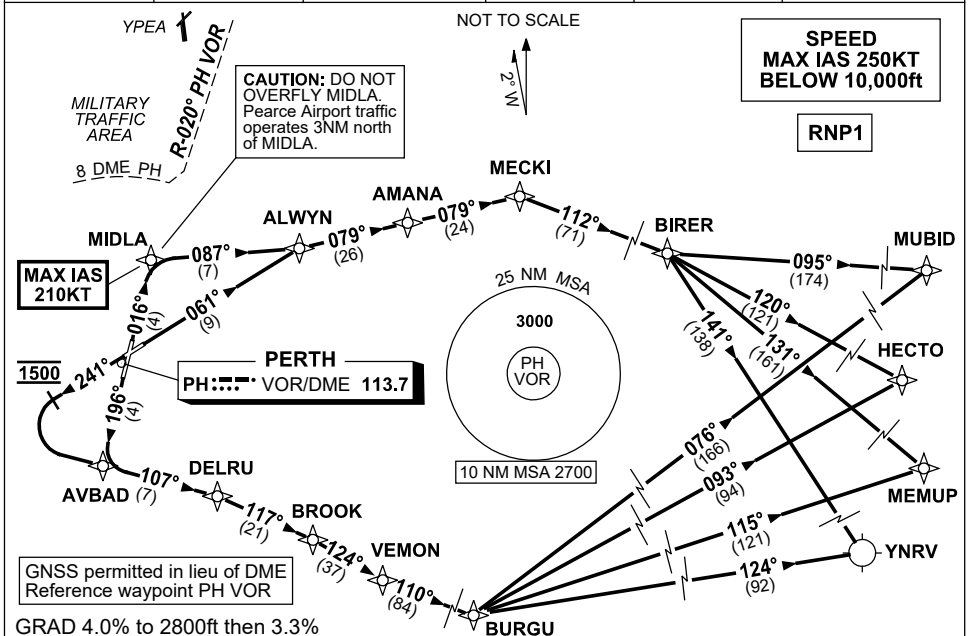


STANDARD INSTRUMENT DEPARTURES (SID) RWYS EAST (JET) (RNAV) PERTH, WA (YPPH)

30 NOV 2023

ATIS 113.7 123.8	ACD 118.55	SMC E of RWY 03/21 122.2 W of RWY 03/21 121.7	TWR 127.4	DEP 118.7	Bearings are Magnetic Elevations in FEET AMSL
---------------------	---------------	---	--------------	--------------	--



MUBID	THREE	DEPARTURE
HECTO	FOUR	DEPARTURE
MEMUP	FOUR	DEPARTURE
RAVENSTHORPE (YNRV)	FOUR	DEPARTURE
RWY 03		

MAX IAS 210KT until MIDLA

- Track 016° to MIDLA
- Turn RIGHT, track 087° to ALWYN

RWY 06

- Track 061° to ALWYN

From ALWYN

- Track 079° to AMANA
- Track 079° to MECKI
- Turn RIGHT, track 112° to BIRER

From BIRER

For MUBID

- Turn LEFT, track 095° to MUBID, thence as cleared

For HECTO

- Turn RIGHT, track 120° to HECTO, thence as cleared

For MEMUP

- Turn RIGHT, track 131° to MEMUP, thence as cleared

For YNRV

- Turn RIGHT, track 141° to YNRV

RWY 21

- Track 196° to AVBAD
- Turn LEFT, track 107° to DELRU

RWY 24

- Track 241°
- AT 1500ft turn LEFT
- Track DCT to AVBAD
- Track 107° to DELRU

From DELRU

- Turn RIGHT, track 117° to BROOK
- Turn RIGHT, track 124° to VEMON
- Turn LEFT, track 110° to BURGU

From BURGU

For MUBID

- Turn LEFT, track 076° to MUBID, thence as cleared

For HECTO

- Turn LEFT, track 093° to HECTO, thence as cleared

For MEMUP

- Turn RIGHT, track 115° to MEMUP, thence as cleared

For YNRV

- Turn RIGHT, track 124° to YNRV

Changes: AVBAD REPLACES NAVEY, VALIDITY NUMBERS, Editorial.

PPHP04-177