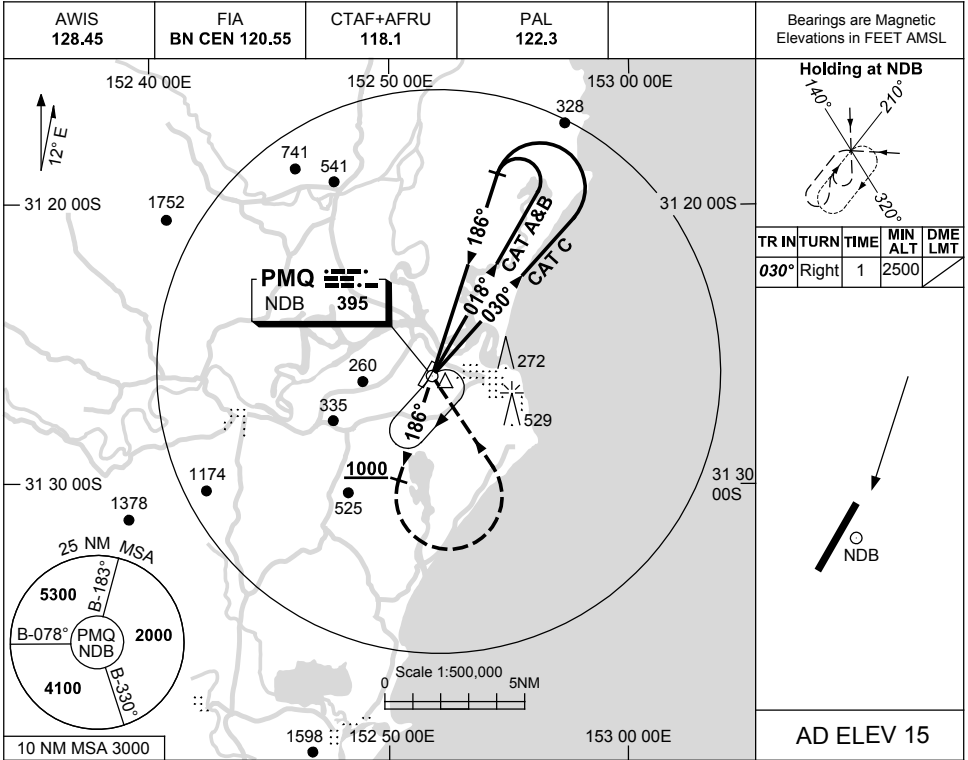


USE QNH

NDB-A

30 NOV 2023

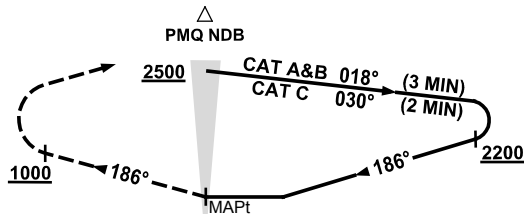
PORT MACQUARIE, NSW (YPMQ)



DME DIST	NOT APPLICABLE				
ALT					

MISSED APPROACH:

TRACK 186°
AT OR ABV 1000FT TURN LEFT,
TRACK DCT TO PMQ NDB.
CLIMB TO 2000FT.



NOTES

1. MAX IAS:
INITIAL : 210KT.

CATEGORY	A	B	C	D
				NOT APPLICABLE
CIRCLING	850 (835-2.4)		1030 (1015-4.0)	
ALTERNATE	(1335-4.4)		(1515-6.0)	

Changes: DELETED R574, Editorial.

PMQNB01-177