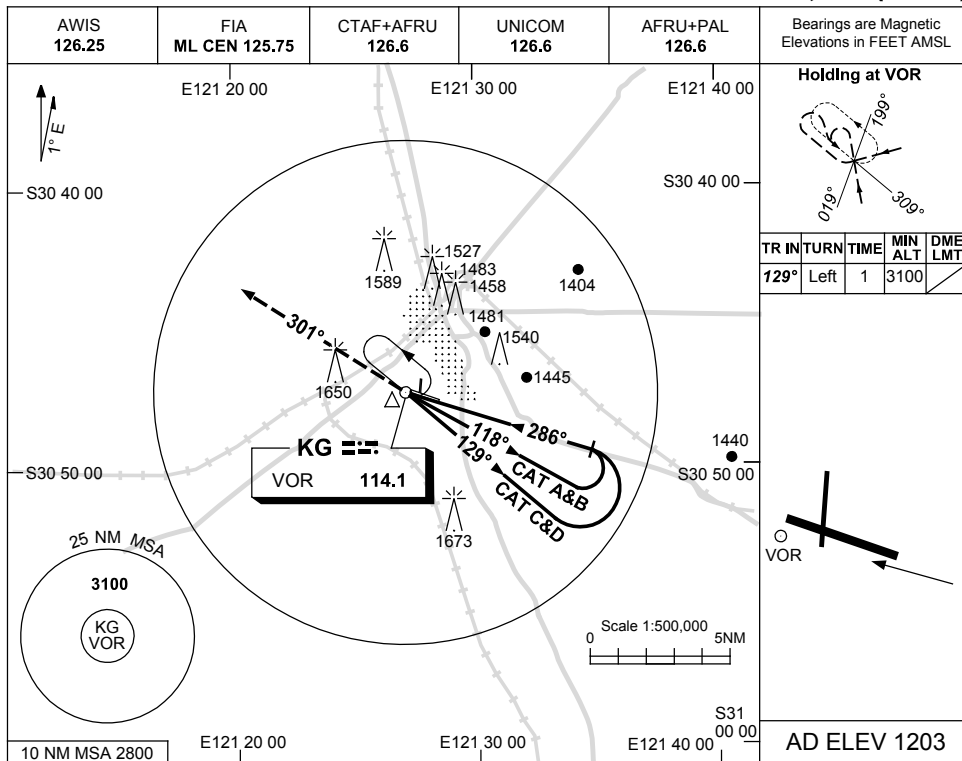


USE QNH

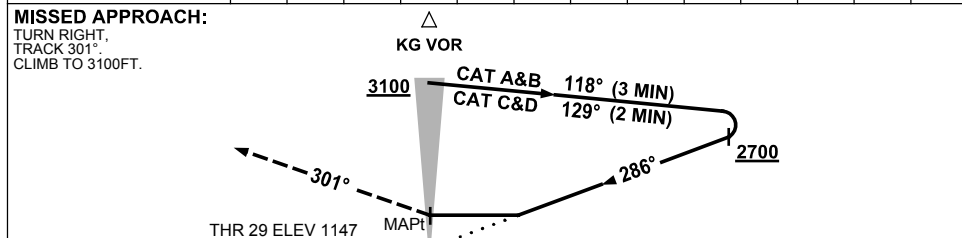
VOR-Y RWY 29

KALGOORLIE-BOULDER, WA (YPKG)

2 MAR 2017



DIST BY DME		NOT APPLICABLE	
ALT			



NOTES

- MAX IAS:
INITIAL :
CAT A&B 140KT.
CAT C&D 210KT.

CAUTION

1650FT RADIO MAST
2.5NM 280° KG
VOR/DME.

CATEGORY	A	B	C	D
S-I VOR	1960 (813-4.6)			
CIRCLING	2060 (857-2.4)	2160 (957-4.0)	2190 (987-5.0)	
ALTERNATE	(1357-4.4)		(1457-6.0)	(1487-7.0)

Changes: 1650FT TWR.

PKGVO07-150