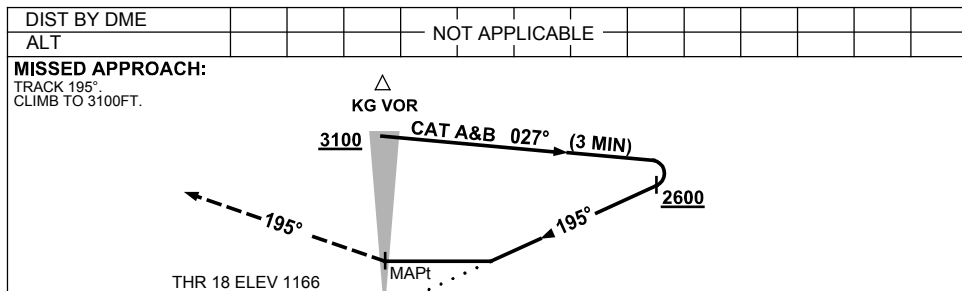
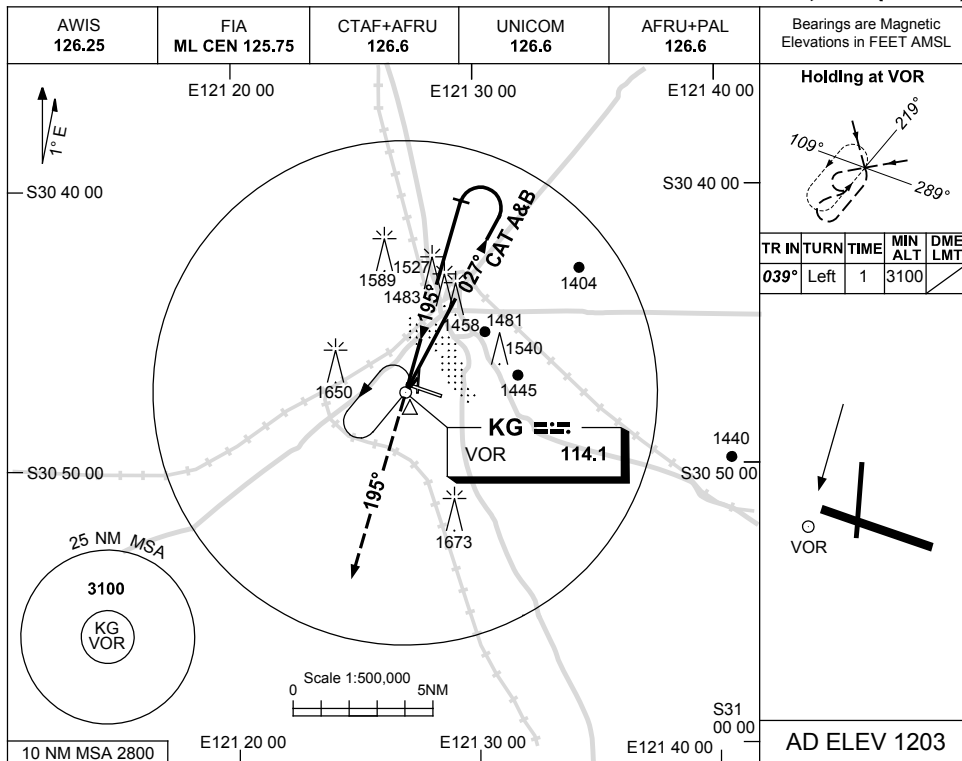


USE QNH

VOR-Y RWY 18

2 MAR 2017

KALGOORLIE-BOULDER, WA (YPKG)



**NOTES**

CATEGORY	A	B	C	D
S-I VOR	1940 (774-4.4)		NOT APPLICABLE	
CIRCLING	2060 (857-2.4)			
ALTERNATE	(1357-4.4)			

1. MAX IAS:  
INITIAL :  
CAT A&B 140KT.

**CAUTION**

1650FT RADIO MAST  
2.5NM 280° KG  
VOR/DME.

Changes: 1650FT TWR.

PKGVO06-150