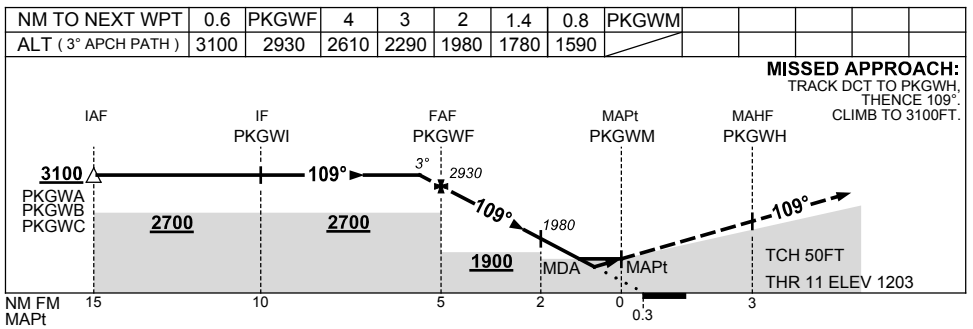
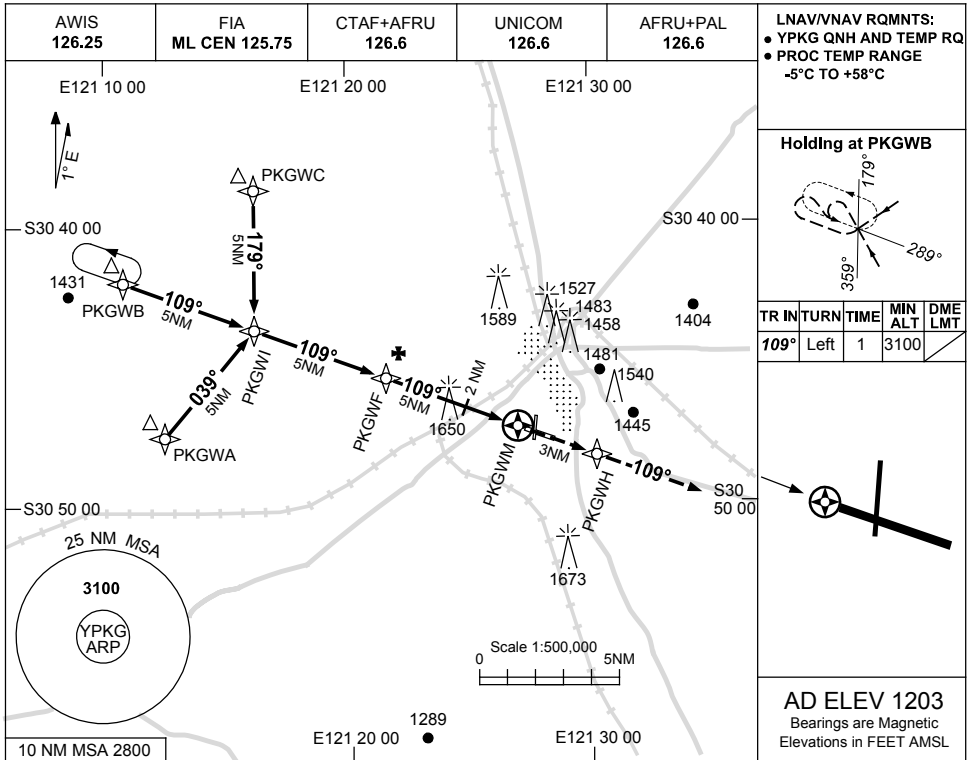


USE QNH

RNAV-Z (GNSS) RWY 11

**KALGOORLIE-BOULDER, WA (YPKG)**

2 MAR 2017



**NOTES**

CATEGORY	A	B	C	D
LNAV/VNAV		1590 (387-2.2)		
LNAV		1780 (577-3.3)		
CIRCLING	2060 (857-2.4)	2160 (957-4.0)	2190 (987-5.0)	
ALTERNATE	(1357-4.4)	(1457-6.0)	(1487-7.0)	

1. MAX IAS:  
INITIAL : 210KT.

**CAUTION**  
1650FT RADIO MAST  
2.5NM 280°KG VOR/DME  
ON RUNWAY APPROACH  
PATH.

Changes: REVISED PROC, 1650FT TWR.

PKGGN01-150