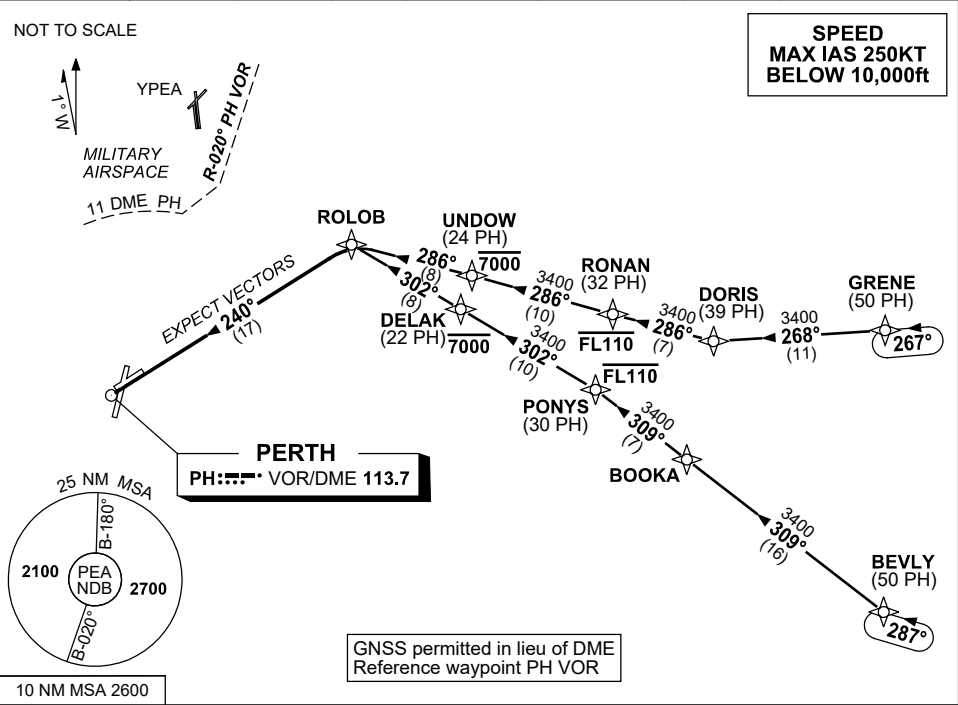


STANDARD INSTRUMENT ARRIVAL (STAR)
PEARCE THREE ROMEO ARRIVAL (RNAV)
PEARCE, WA (YPEA)

15 JUN 2023

ATIS 340 136.4 316.1	DEP PEA CEN 123.3 135.9	APP PEA APP 130.2	TWR 118.3	FIA (AH) PH CEN 135.25	CTAF+AFRU (AH) 118.3	AWIS (AH) 316.1	Bearings are Magnetic Elevations in FEET AMSL
-------------------------	-------------------------------	-------------------------	--------------	---------------------------	-------------------------	--------------------	--



TRANSITIONS:

- GRENE:**
- From GRENE, track 268° to DORIS, (NON-JET)
 - Turn RIGHT, track 286° to RONAN, **Cross** RONAN AT or BLW FL110,
 - Track 286° to UNDOU, **Cross** UNDOU AT or BLW 7000ft,
 - Track 286° to ROLOB, Then follow ARRIVAL instructions

- BEVLY:**
- From BEVLY, track 309° to BOOKA, (JET)
 - Track 309° to PONY, **Cross** PONY AT or BLW FL110,
 - Turn LEFT, track 302° to DELAK, **Cross** DELAK AT or BLW 7000ft,
 - Track 302° to ROLOB, Then follow ARRIVAL instructions

ARRIVAL: PEARCE THREE ROMEO

- From ROLOB turn LEFT
- Track 240° to PH VOR
- Expect radar vectors to YPEA

COMMUNICATIONS FAILURE: PROCEDURE IN IMC

- Squawk 7600, comply with vertical navigation requirements, but not below MSA.
- Track via the latest STAR clearance to the nominated runway, then fly the most suitable approach in accordance with ERS A EMERG Section 1.5.