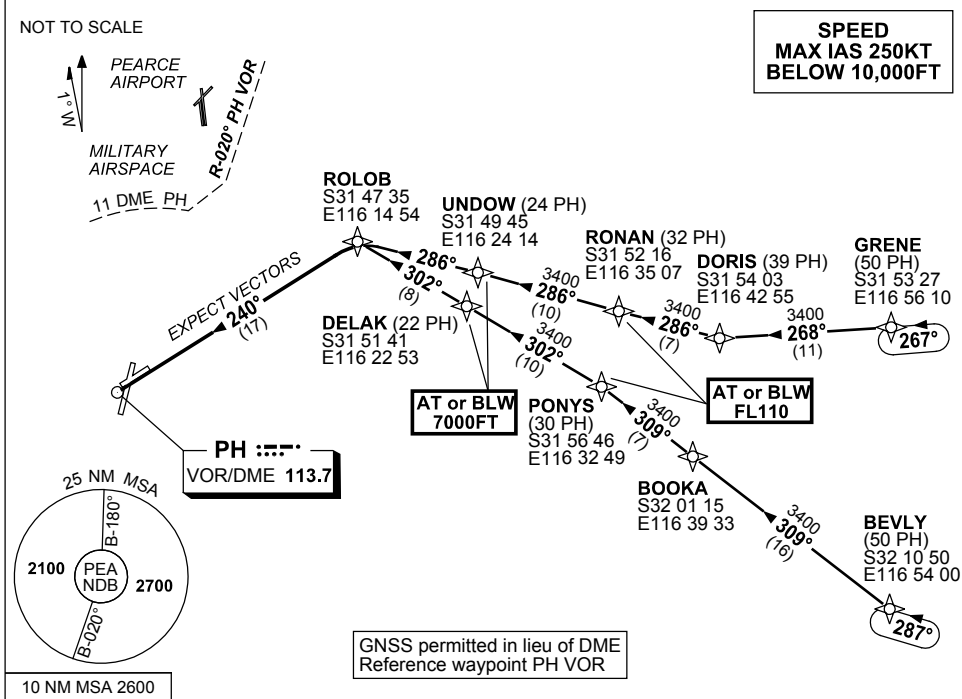


**STANDARD INSTRUMENT ARRIVAL (STAR)
PEARCE THREE ROMEO ARRIVAL (RNAV)
PEARCE, WA (YPEA)**

9 NOV 2017

ATIS 340 316.1	DEP PEA CEN 123.3 135.9	APP PEA APP 130.2	TWR 118.3	FIA (AH) PH CEN 135.25	CTAF+AFRU (AH) 118.3	AWIS (AH) 316.1	Bearings are Magnetic Elevations in FEET AMSL
-------------------	--------------------------------------	--------------------------------	--------------	----------------------------------	-------------------------	--------------------	--------------------------------------------------



TRANSITIONS:

- GRENE:**
- From GRENE, track 268° to DORIS, (NON-JET)
 - Turn RIGHT, track 286° to RONAN, **Cross** RONAN AT or BLW FL110,
 - Track 286° to UNDOU, **Cross** UNDOU AT or BLW 7000FT,
 - Track 286° to ROLOB, Then follow ARRIVAL instructions

- BEVLY:**
- From BEVLY, track 309° to BOOKA, (JET)
 - Track 309° to PONYS, **Cross** PONYS AT or BLW FL110,
 - Turn LEFT, track 302° to DELAK, **Cross** DELAK AT or BLW 7000FT,
 - Track 302° to ROLOB, Then follow ARRIVAL instructions

ARRIVAL: PEARCE THREE ROMEO

- From ROLOB turn LEFT
- Track 240° to PH VOR
- Expect radar vectors to YPEA

COMMUNICATIONS FAILURE: PROCEDURE IN IMC

- Squawk 7600, comply with vertical navigation requirements, but not below MSA.
- Track via the latest STAR clearance to the nominated runway, then fly the most suitable approach in accordance with ERSa EMERG Section 1.5.

Changes: CHART NAME, SPEED REST.