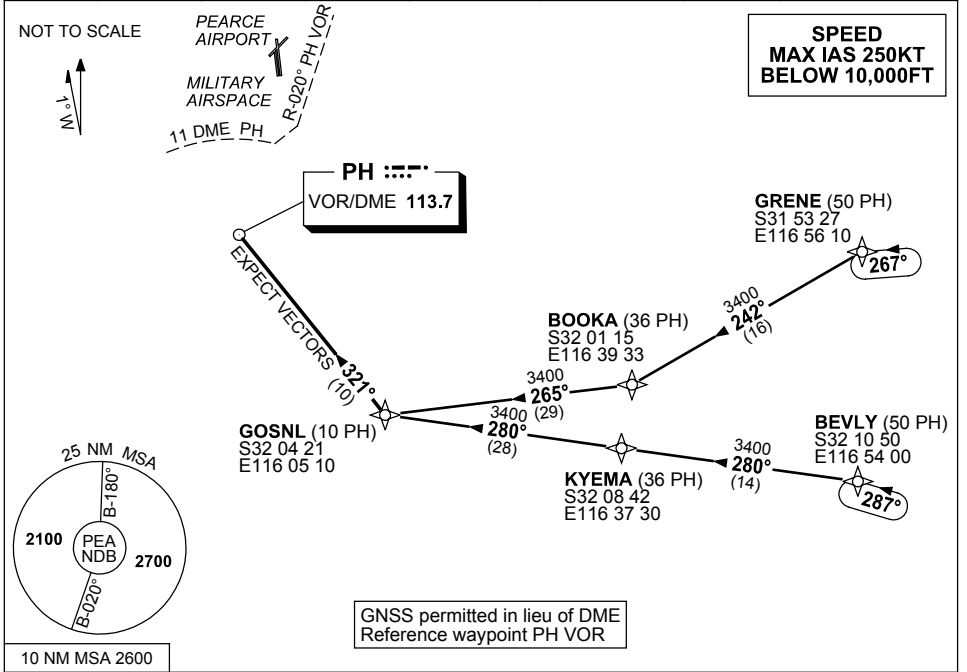


**STANDARD INSTRUMENT ARRIVAL (STAR)  
PEARCE THREE GOLF ARRIVAL (RNAV)  
PEARCE, WA (YPEA)**

**9 NOV 2017**

ATIS 340 316.1	DEP PEA CEN 123.3 135.9	APP PEA APP 130.2	TWR 118.3	FIA (AH) PH CEN 135.25	CTAF+AFRU (AH) 118.3	AWIS (AH) 316.1	Bearings are Magnetic Elevations in FEET AMSL
-------------------	-------------------------------	-------------------------	--------------	---------------------------	-------------------------	--------------------	--



**TRANSITIONS:**

<p><b>GRENE: (NON-JET)</b></p> <ul style="list-style-type: none"> <li>• From GRENE track 242° to BOOKA</li> <li>• Turn RIGHT, track 265° to GOSNL</li> <li>• Then follow ARRIVAL instructions</li> </ul>	<p><b>BEVLY: (JET)</b></p> <ul style="list-style-type: none"> <li>• From BEVLY track 280° to KYEMA</li> <li>• Track 280° to GOSNL</li> <li>• Then follow ARRIVAL instructions</li> </ul>
--	--

**ARRIVAL: PEARCE THREE GOLF**

- From GOSNL, turn RIGHT, track 321° to PH VOR
- Expect radar vectors to YPEA

**COMMUNICATIONS FAILURE: PROCEDURE IN IMC**

- Squawk 7600, comply with vertical navigation requirements, but not below MSA.
- Track via the latest STAR clearance to the nominated runway, then fly the most suitable approach in accordance with ERSA EMERG Section 1.5.

Changes: CHART NAME, SPEED REST. PEASR02-153