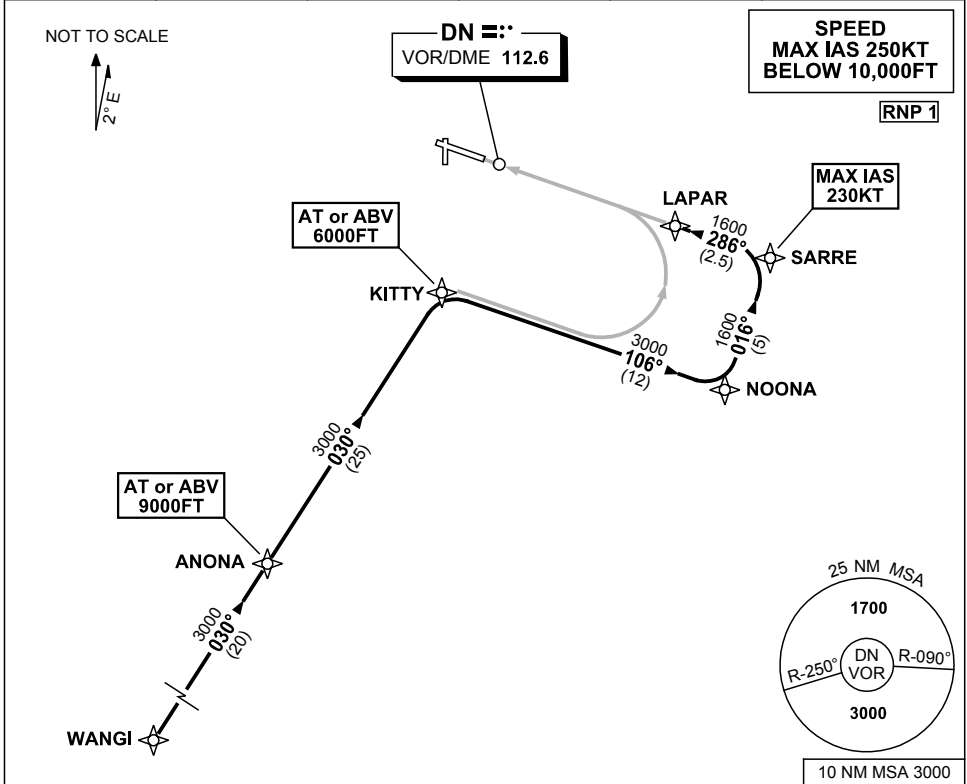


**STANDARD INSTRUMENT ARRIVAL (STAR)  
WANGI ONE PAPA, UNIFORM ARRIVALS (RNAV) RWY 29  
DARWIN, NT (YPDN)**

17 JUN 2021

ATIS 128.25 308 316.2	APP-E 125.2 APP-W 134.1	TWR 133.1	SMC 121.8	Bearings are Magnetic Elevations in FEET AMSL
-----------------------------	----------------------------	--------------	--------------	--



**ARRIVAL: WANGI ONE**

**RWY 29 PAPA:**

- From WANGI track 030° to ANONA  
**Cross** ANONA AT or ABV 9000FT
- Track 030° to KITTY for RNAV-P (RNP) or RNAV-Y (RNP) RWY 29 approach  
**Cross** KITTY AT or ABV 6000FT

**RWY 29 UNIFORM:**

- From WANGI track 030° to ANONA  
**Cross** ANONA AT or ABV 9000FT
- Track 030° to KITTY  
**Cross** KITTY AT or ABV 6000FT
- Turn RIGHT, track 106° to NOONA
- Turn LEFT, track 016° to SARRE  
MAX IAS 230KT from SARRE
- Turn LEFT, track 286° to LAPAR for RNAV-U (RNP) RWY 29 approach

**COMMUNICATIONS FAILURE: PROCEDURE IN IMC**

- Squawk 7600, comply with vertical navigation requirements, but not below MSA.
- Track via the latest STAR clearance to the nominated runway, then fly the most suitable approach in accordance with ERS A EMERG Section 1.5.

Changes: RWY 29 PAPA PROC TERMINATION.

PDNSR09-167