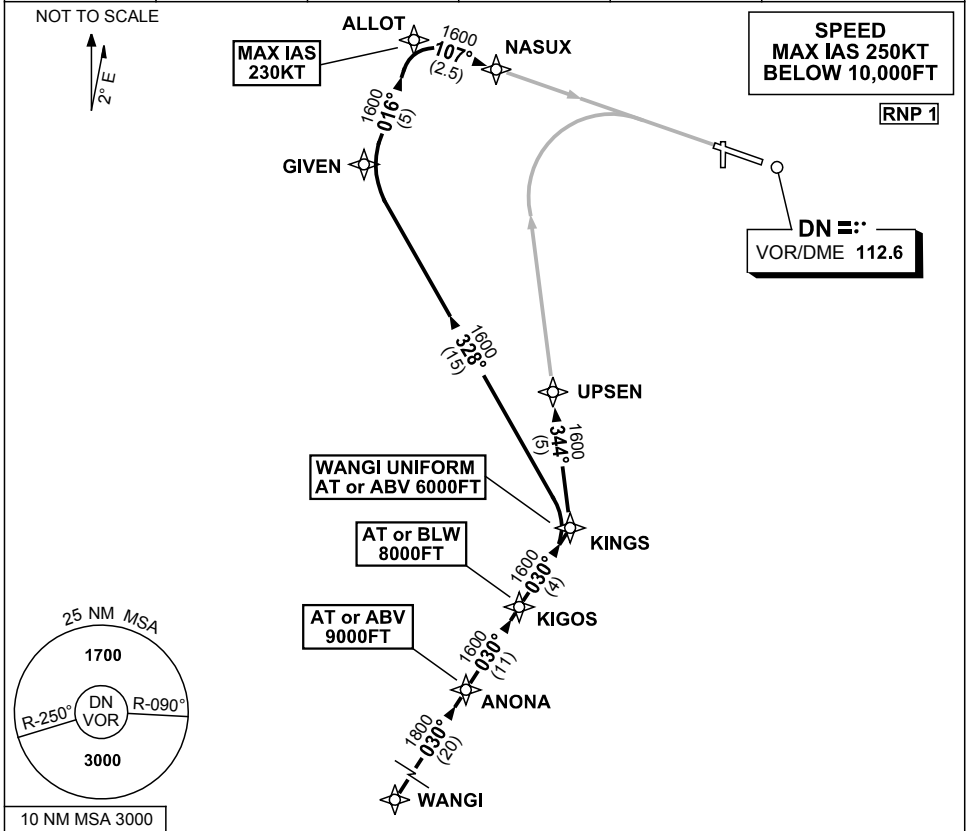


**STANDARD INSTRUMENT ARRIVAL (STAR)
WANGI ONE PAPA, UNIFORM ARRIVALS (RNAV) RWY 11
DARWIN, NT (YPDN)**

17 JUN 2021

ATIS 128.25 308 316.2	APP-E 125.2 APP-W 134.1	TWR 133.1	SMC 121.8		Bearings are Magnetic Elevations in FEET AMSL
-----------------------------	----------------------------	--------------	--------------	--	--



ARRIVAL: WANGI ONE

RWY 11 PAPA:

- From WANGI track 030° to ANONA
Cross ANONA AT or ABV 9000FT
- Track 030° to KIGOS
Cross KIGOS AT or BLW 8000FT
- Track 030° to KINGS
- Turn LEFT, track 344° to UPSEN for RNAV-P (RNP) or RNAV-Y (RNP) RWY 11 approach

RWY 11 UNIFORM:

- From WANGI track 030° to ANONA
Cross ANONA AT or ABV 9000FT
- Track 030° to KIGOS
Cross KIGOS AT or BLW 8000FT
- Track 030° to KINGS
Cross KINGS AT or ABV 6000FT
- Turn LEFT, track 328° to GIVEN
- Turn RIGHT track 344° to UPSEN for RNAV-U (RNP) RWY 11 approach
- Turn RIGHT track 016° to ALLOT, MAX IAS 230KT from ALLOT
- Turn RIGHT track 107° to NASUX for RNAV-U (RNP) RWY 11 approach

COMMUNICATIONS FAILURE: PROCEDURE IN IMC

- Squawk 7600, comply with vertical navigation requirements, but not below MSA.
- Track via the latest STAR clearance to the nominated runway, then fly the most suitable approach in accordance with ERS A EMERG Section 1.5.

Changes: RWY 11 PAPA PROC TERMINATION.

PDNSR08-167