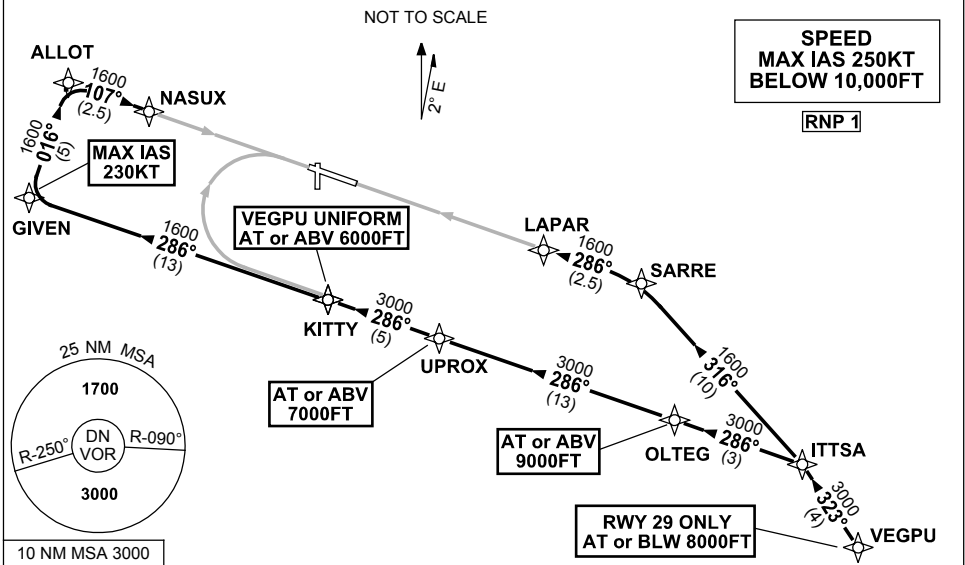


**STANDARD INSTRUMENT ARRIVAL (STAR)
VEGPU SIX PAPA, UNIFORM ARRIVAL (RNAV)
DARWIN, NT (YPDN)**

17 JUN 2021

ATIS 128.25 308 316.2	APP-E 125.2 APP-W 134.1	TWR 133.1	SMC 121.8		Bearings are Magnetic Elevations in FEET AMSL
-----------------------------	----------------------------	--------------	--------------	--	--



ARRIVAL: VEGPU SIX

RWY 11 PAPA:

- From VEGPU track 323° to ITTSA
- Turn LEFT, track 286° to OLTEG
Cross OLTEG AT or ABV 9000FT
- Track 286° to UPROX
Cross UPROX AT or ABV 7000FT
- Track 286° to KITTY for RNAV-P (RNP) or RNAV-Y (RNP) RWY 11 approach

RWY 11 UNIFORM:

- From VEGPU track 323° to ITTSA
- Turn LEFT, track 286° to OLTEG
Cross OLTEG AT or ABV 9000FT
- Track 286° to UPROX
Cross UPROX AT or ABV 7000FT
- Track 286° to KITTY
Cross KITTY AT or ABV 6000FT
- Track 286° to GIVEN
MAX IAS 230KT from GIVEN
- Turn RIGHT track 016° to ALLOT
- Turn RIGHT track 107° to NASUX for RNAV-U (RNP) RWY 11 approach

RWY 29 UNIFORM:

- Cross VEGPU AT or BLW 8000FT
- From VEGPU, track 323° to ITTSA
- Turn LEFT, track 316° to SARRE
- Turn LEFT, track 286° to LAPAR for RNAV-U (RNP) RWY 29 approach

COMMUNICATIONS FAILURE: PROCEDURE IN IMC

- Squawk 7600, comply with vertical navigation requirements, but not below MSA.
- Track via the latest STAR clearance to the nominated runway, then fly the most suitable approach in accordance with ERS A EMERG Section 1.5.

Changes: RWY 11 PAPA PROC TERMINATION.

PDNSR07-167