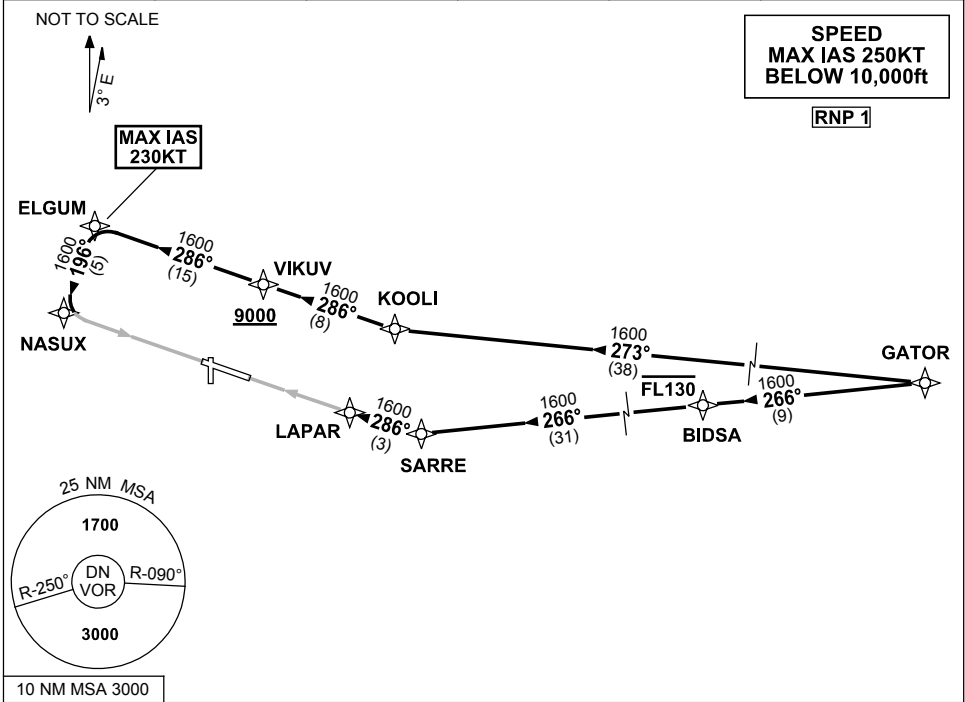


**STANDARD INSTRUMENT ARRIVAL (STAR)
GATOR ONE X-RAY ARRIVAL (RNAV)
DARWIN, NT (YPDN)**

7 SEP 2023

ATIS 128.25 308 316.2	APP-E 125.2 APP-W 134.1	TWR 133.1	SMC 121.8		Bearings are Magnetic Elevations in FEET AMSL
-----------------------------	----------------------------	--------------	--------------	--	--



ARRIVAL: GATOR ONE X-RAY

RWY 11:

- From GATOR track 273° to KOOLI
- Turn RIGHT, track 286° to VIKUV
 Cross VIKUV AT or ABV 9000ft
- Track 286° to ELGUM,
 MAX IAS 230KT FROM ELGUM
- Turn LEFT track 196° to NASUX
 for RNP X (AR) or RNP Y (AR)
 RWY 11 approach

RWY 29:

- From GATOR track 266° TO BIDS
- **Cross** BIDS AT or BLW FL130
- Track 266° to SARRE
- Turn RIGHT, track 286° to LAPAR for
 RNP X (AR) or RNP Y (AR) RWY 29
 approach

COMMUNICATIONS FAILURE: PROCEDURE IN IMC

- Squawk 7600, comply with vertical navigation requirements, but not below MSA.
- Track via the latest STAR clearance to the nominated runway, then fly the most suitable approach in accordance with ERSA EMERG Section 1.5.

Changes: VALIDITY INDICATOR, SUFFIX, Editorial.

PDNSR02-176