

17 JUN 2021

USE QNH

RNAV-Y (RNP) RWY 29
DARWIN, NT (YPDN)

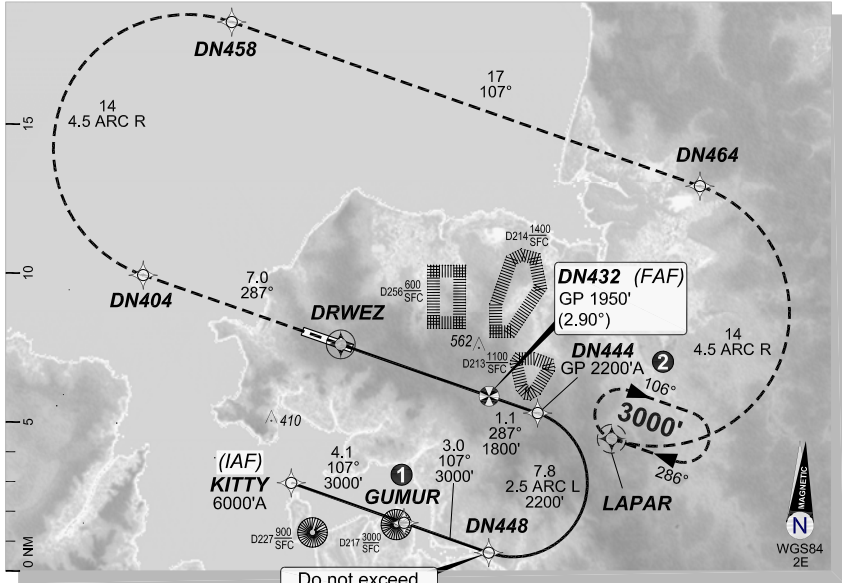
GE PROPRIETARY AND CONFIDENTIAL

ATIS	APP-E APP-W	125.2 134.1	SMC	TWR	DEP
128.25 308 316.2			121.8	133.1	123.0

RNAV (RNP) RNV Y 29	Apt Elev. 103' TDZE 90'	DN432 (FAF) GP 1950' (2.90°)	Trans Level FL110
-------------------------------	--	--	-----------------------------

CAUTION: USE THIS CHART ONLY WHEN RWY 29 THRESHOLD IS DISPLACED 765M.

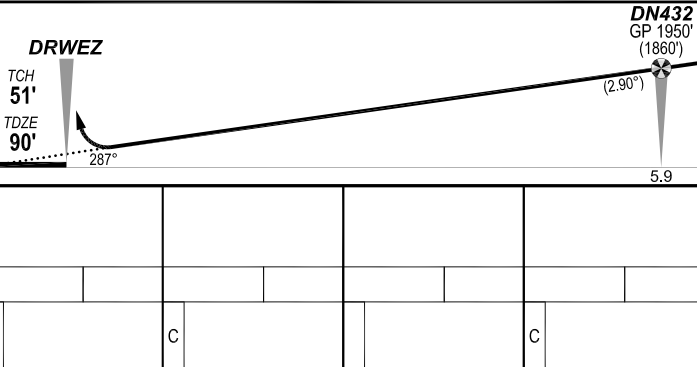
- ① Latest position where the aircraft can join the procedure.
- ② 2.90 GPA prior to FAS applicable to Airbus Only.



MISSED APPROACH:

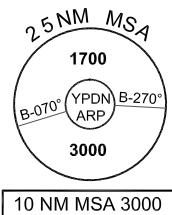
Climb to **3000'** via the RNAV (RNP) Missed Approach track to **LAPAR**.

COPYRIGHT © NAVERUS, INC., 2021. ALL RIGHTS RESERVED.



NOTES:

- 1. YPDN ACT QNH RQ



FOR CASA APPROVED OPERATORS ONLY

Changes: From SUP H31/21.

PDNGN13-167

DO NOT USE FOR NAVIGATION

