

USE QNH

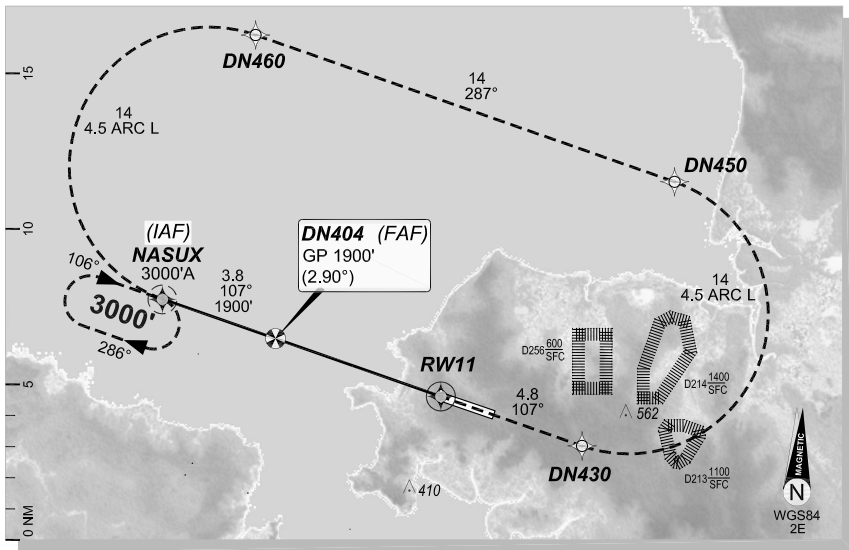
RNAV-U (RNP) RWY 11

DARWIN, NT (YPDN)

5 NOV 2020

GE PROPRIETARY AND CONFIDENTIAL

ATIS 128.25	APP-E APP-W 125.2 134.1	SMC 121.8	TWR 133.1	DEP 123.0
RNAV (RNP) RNV U 11	Apt Elev. 103' TDZE 96'	DN404 (FAF) GP 1900' (2.90°)	Trans Level FL110	



MISSED APPROACH:

Climb to **3000'** via the RNAV (RNP) Missed Approach track to **NASUX**.

DN404

GP 1900' (1804')
(2.90°)

RWY 11

TCH **57'**
TDZE **96'**

5.6

107°

NOTES:

1. YPDN ACT QNH RQ



10 NM MSA 3000

RNP **0.30**
DA(H) **354'** (258')

C **1300m**

FOR CASA APPROVED OPERATORS ONLY

COPYRIGHT © NAVERUS, INC., 2020. ALL RIGHTS RESERVED.

Changes: Mag Var 2E, TF's adjusted 286° to 287°/106° to 107°, NASUX hold 106°.

PDNGN08-165

DO NOT USE FOR NAVIGATION

