

USE QNH

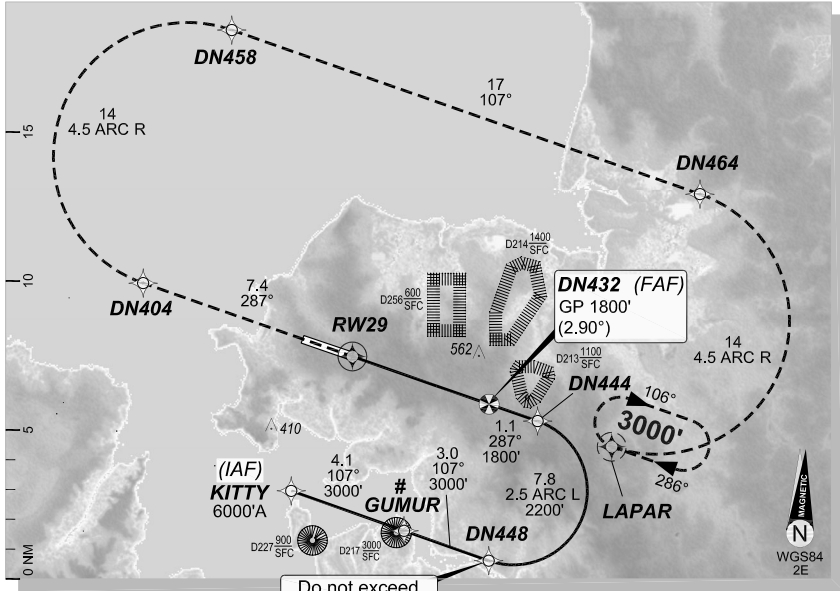
**RNAV-P (RNP) RWY 29
DARWIN, NT (YPDN)**

5 NOV 2020

GE PROPRIETARY AND CONFIDENTIAL

ATIS 128.25	APP-E APP-W 125.2 134.1	SMC 121.8	TWR 133.1	DEP 123.0
RNAV (RNP) RNV P 29	Apt Elev. 103' TDZE 81'	DN432 (FAF) GP 1800' (2.90°)	Trans Level FL110	

Latest position where the aircraft can join the procedure.

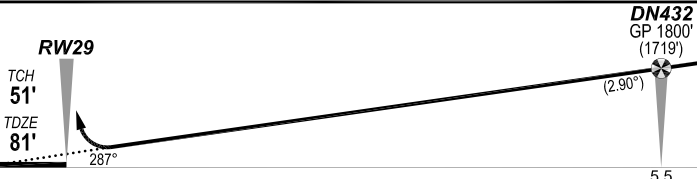


Do not exceed
200 KIAS

MISSED APPROACH:

Climb to **3000'** via the RNAV (RNP) Missed Approach track to LAPAR.

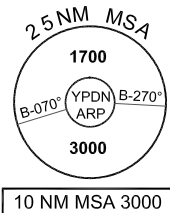
COPYRIGHT © NAVERUS, INC., 2020. ALL RIGHTS RESERVED.



NOTES:

1. YPDN ACT QNH RQ

	RNP 0.15		RNP 0.30
	DA(H) 396' (315')		DA(H) 411' (330')
	HIALS out		HIALS out
	C 700m 1600m		C 800m 1700m



FOR CASA APPROVED OPERATORS ONLY

Changes: Mag Var 2E, TF's adjusted 286° to 287°/106° to 107°, LAPAR hold 286°.

PDNGN07-165

DO NOT USE FOR NAVIGATION

